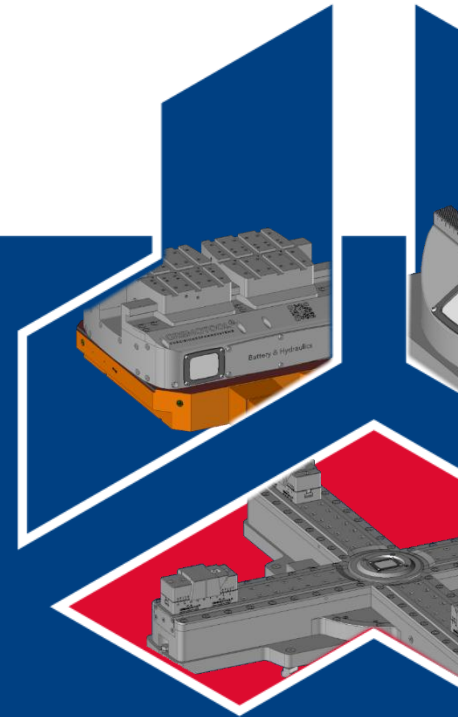


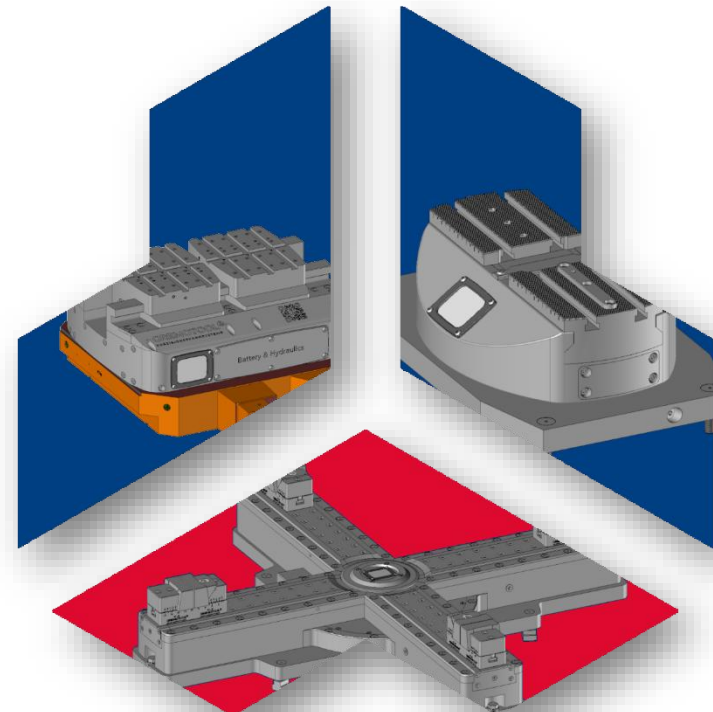
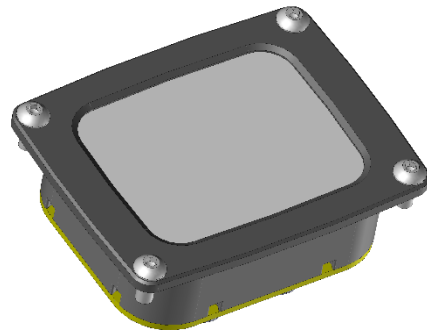
GREMOTOOL® CONNECTED SYSTEMS





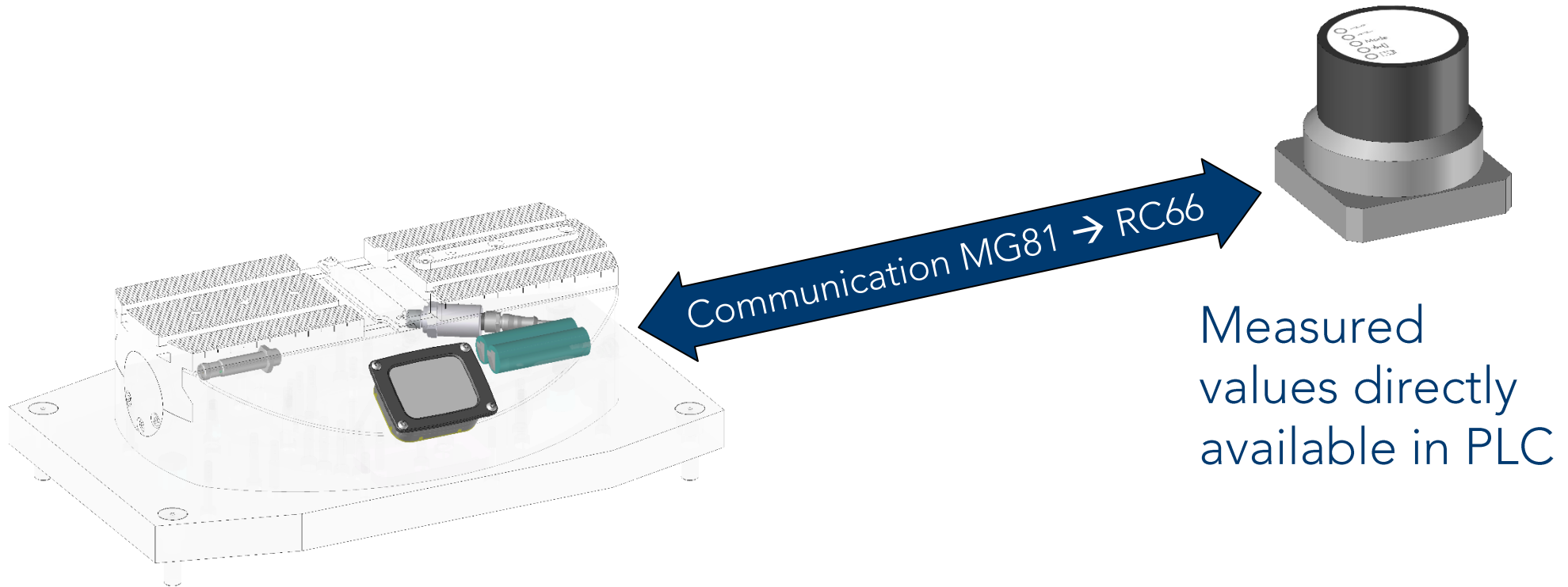
Gremotool® New Products 2025

- I. Gremotool® connected
- II. HMCc
- III. LRC
- IV. MTCc





Gremotool® connected



Sensor-based monitoring
(Clamping system-independent)

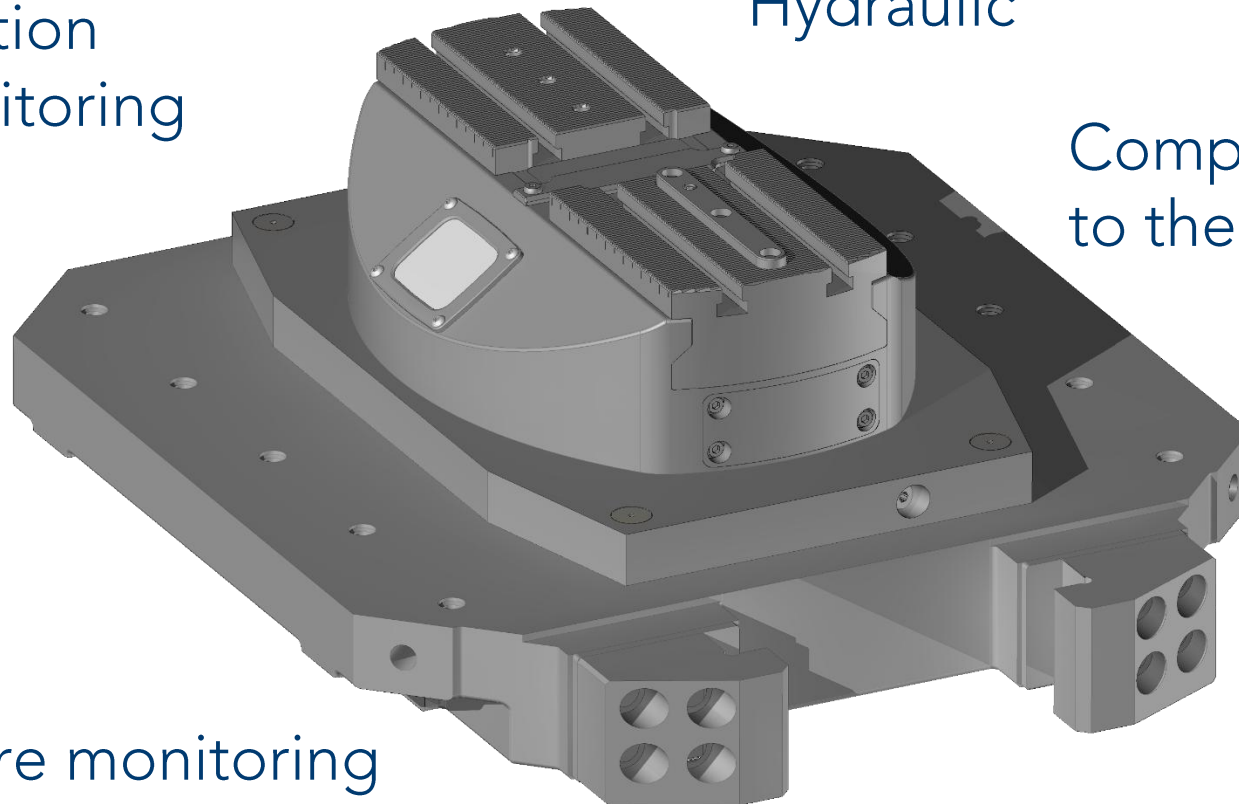


Gremotool® HMCc (74 / 100 / 120)

Position
monitoring

Hydraulic

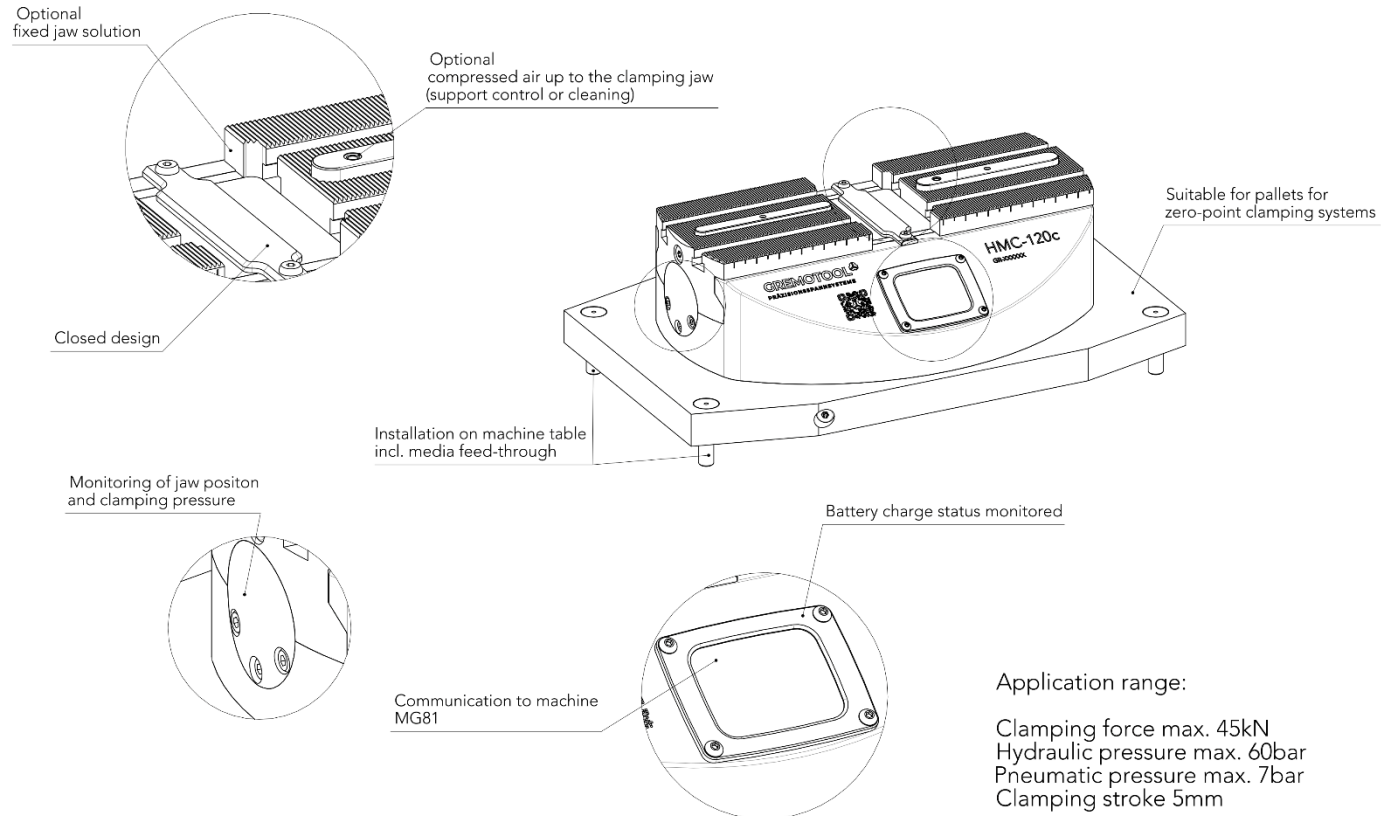
Compressed air up
to the clamping jaw



Pressure monitoring



Gremotool® HMCc (74 / 100 / 120)





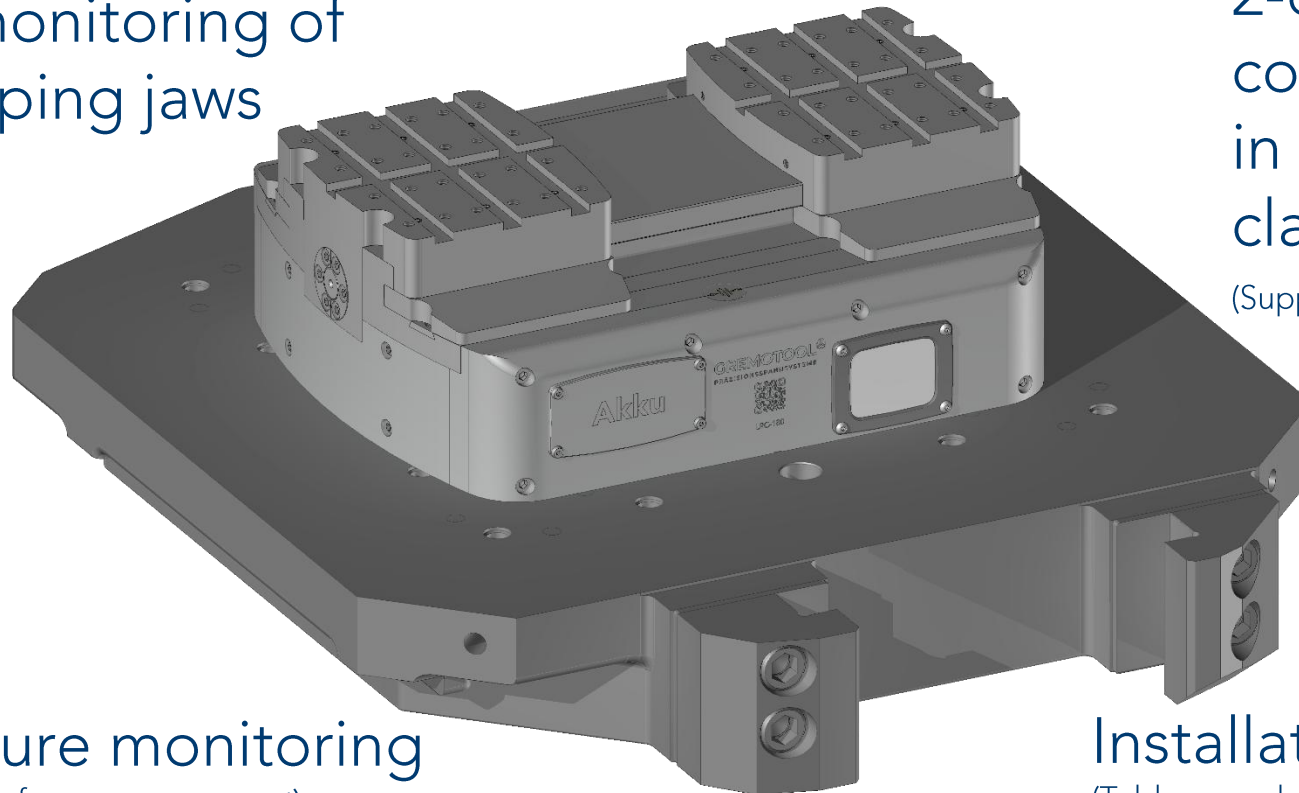
Gremotool® LRC (150 / 180 / ...)

Hydraulic centric long-range clamp

Position monitoring of
both clamping jaws

2-channel
compressed air
in both
clamping jaws

(Support control & Cleaning)

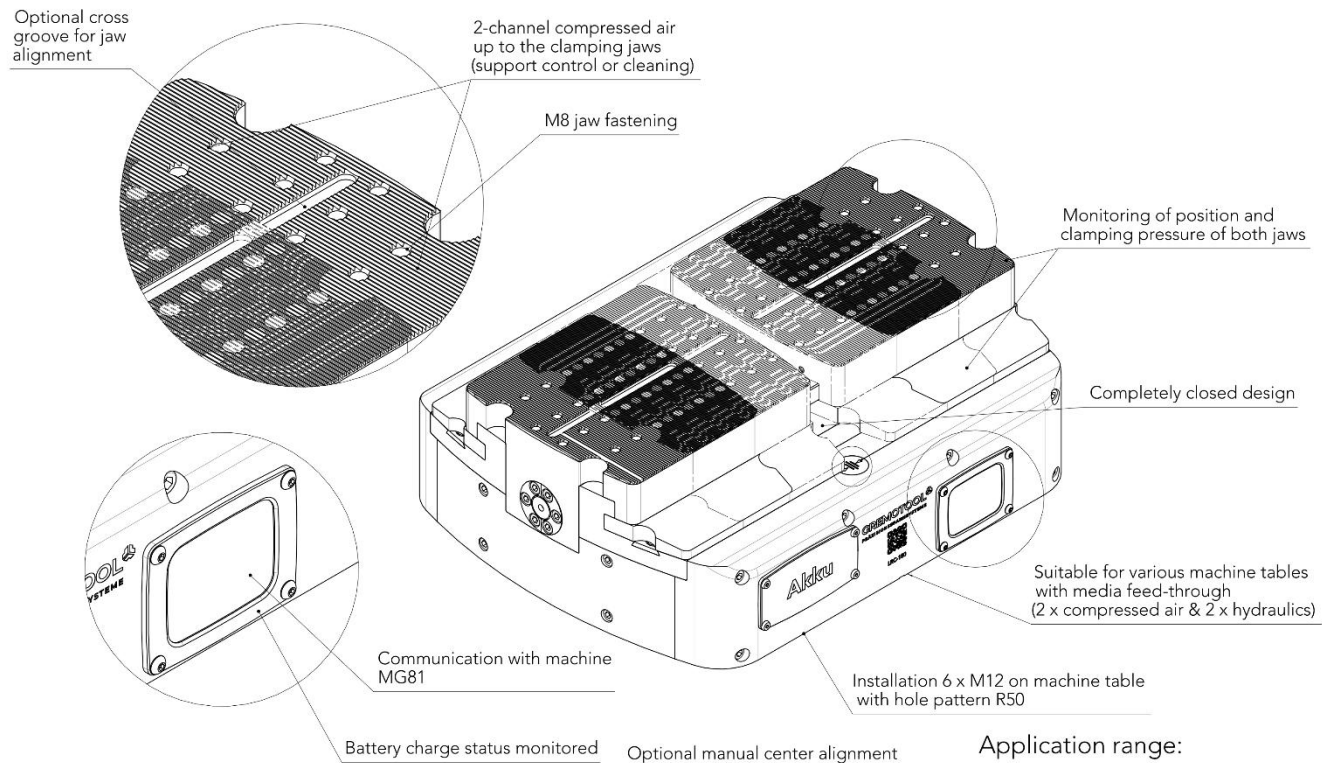


2 x Pressure monitoring
(indirect clamping force measurement)

Installation options
(Table assembly & pallets)



Gremotool® LRC (150 / 180 / ...)



Application range:

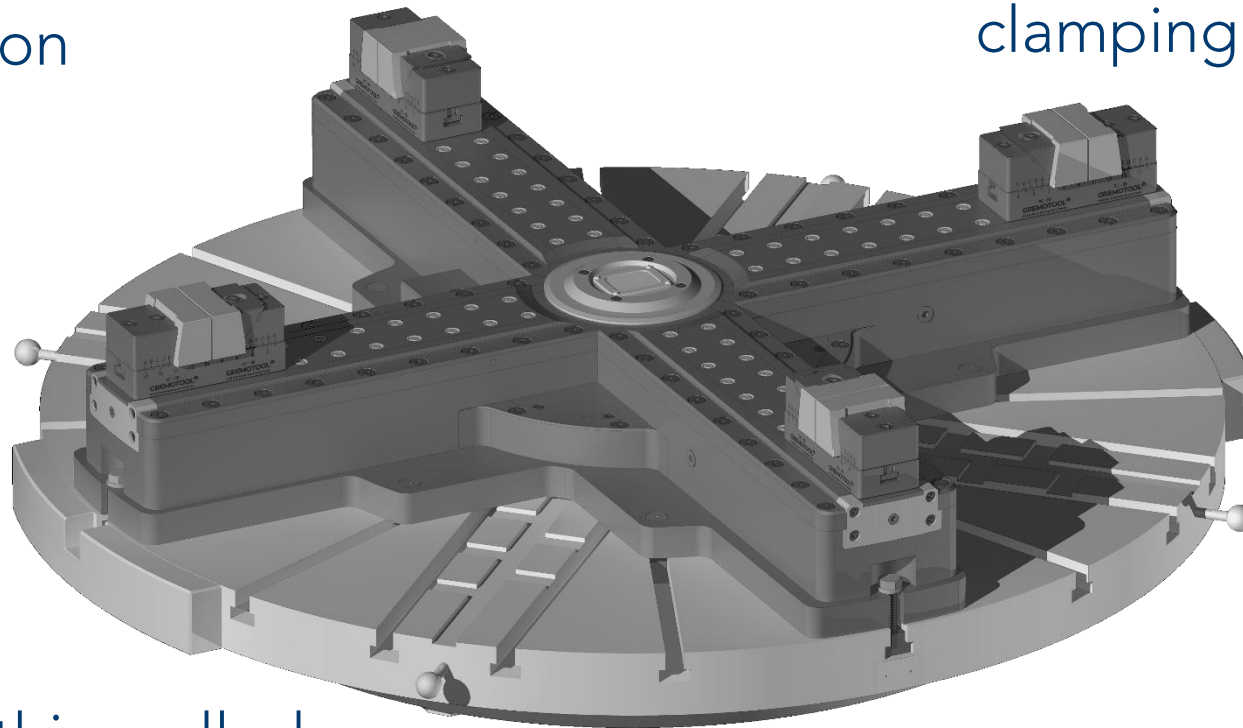
- Clamping force max. 40 kN
- Hydraulic pressure max. 200 bar
- Pneumatic pressure max. 7bar
- Clamping stroke per jaw 55mm
- Total clamping stroke 110mm



Gremotool® MTCc (800 / 1000 / 1200 / ...)

Mechanical mill-turn chuck with compensation

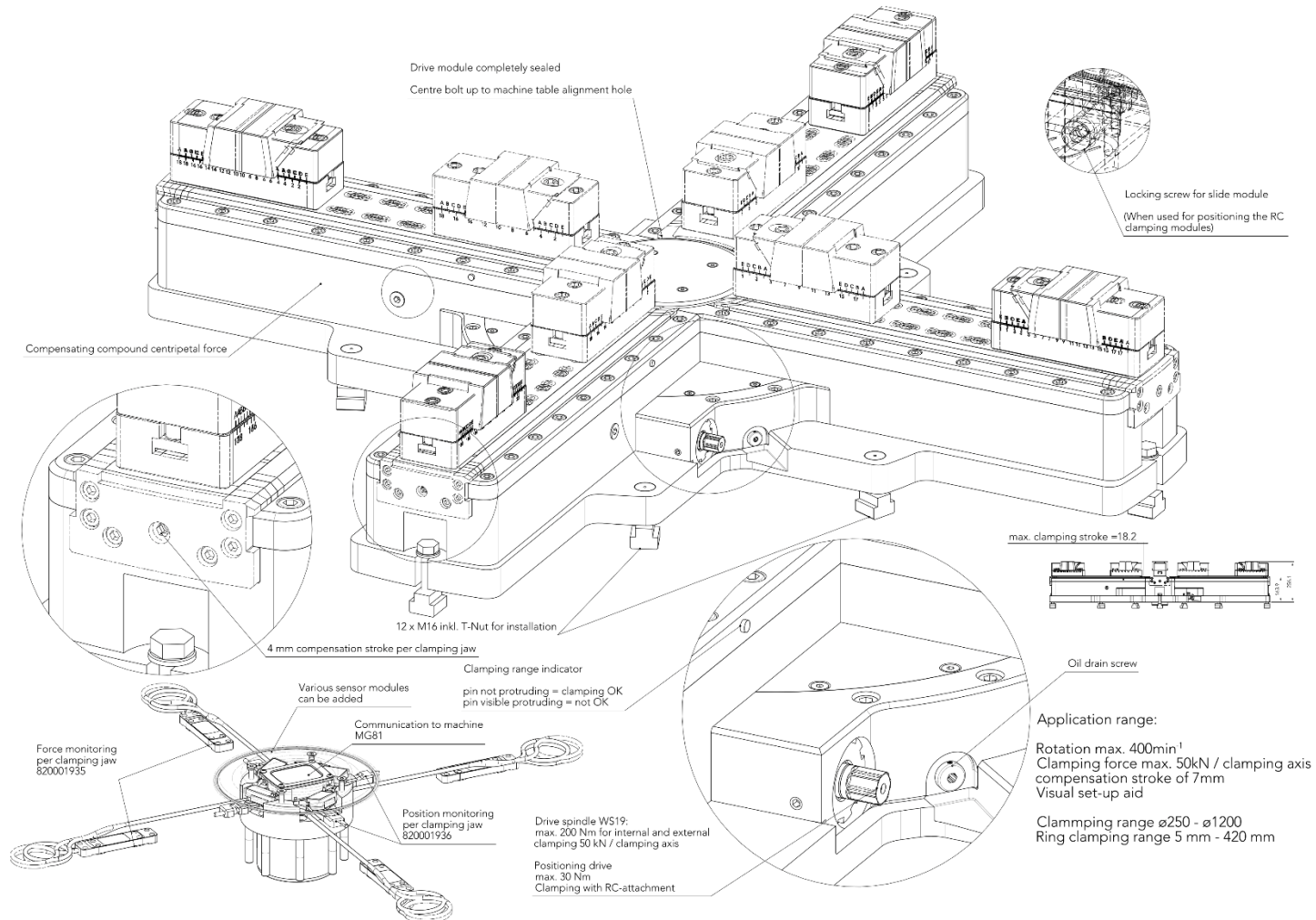
Position monitoring per clamping arm



Clamping thin-walled components without distortion



Gremotool® MTCc (800 / 1000 / 1200 / ...)





Thank you for your attention

Imprint

Gremotool GmbH
Wilerstrasse 3
CH-9200 Gossau SG

www.gremotool.ch
info@gremotool.ch
+41 (0)71 930 03 90

Commercial Register:
UID-Nr. CHE-498.310.590

This document is protected by copyright. All rights reserved. Any use, even partial use, in particular publication, duplication, distribution, reproduction, processing and/or modification, requires the prior written authorisation of Gremotool GmbH.

Misprints, errors and technical changes reserved.