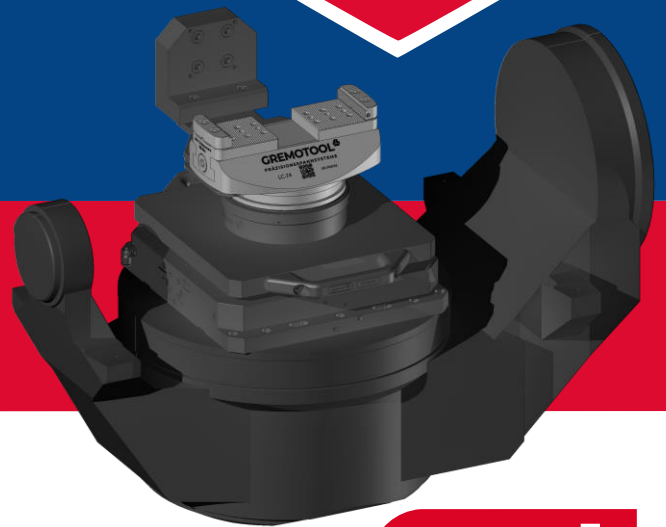


GREMOTOOL

PRÄZISIONSSPANNSYSTEME



Erowa

Gremotool Clamping devices & Erowa

swiss
made 



GREMOTOOL
Präzisionssysteme

Wilerstrasse 3
CH-9200 Gossau

info@gremotool.ch
www.gremotool.ch

Telefon +41 (0)71 930 03 90

Overview

Gremotool clamping devices with Erowa

Overview	2
Product presentation	3
Overview of products	9
Variant table	11
Erowa ITS-50	11
Erowa ITS-115	13
Erowa ITS-148	15
Erowa VPC 52 / 96	18
Erowa UPC-320	20
Erowa MTS-225	23
Erowa MTS-398/498	26
Applications	30
Zero-point clamping systems	30
Gremotool Fixture	31
Accessories	32
Imprint	34

Product presentation

Gremotool clamping devices with Erowa

The automated production requires flexible and precise clamping devices. Erowa's zero-point clamping system provide a larger part of this flexibility. Different clamping devices require a common interface so that they can be customised to the requirements of the workpiece to be clamped. The ideal solution is clamping devices of Gremotool, which precisely connect the workpiece and the zero-point clamping system.



Product presentation

Advantages Gremotool with Erowa

Clamping force

The high clamping forces of the Gremotool clamping devices can be influenced by torque or pressure. This makes it possible to clamp plastic workpieces without deformation and forged parts with a secure hold without damaging the clamping device.

Centering precision

The design of all Gremotool centering vices guarantees the user precise centering of ± 0.02 mm in the centre of the clamping device.

Accessibility

The Gremotool clamping devices are suitable for various application scenarios. Accessibility for the processing machine is a key element in enabling the best possible processing strategy. They can be used directly on the zero-point clamping system, on pallets or on towers.

Compact

The compact power package fits into any machine and guarantees a firm hold of the workpiece for machining. The solid construction with low weight also allows manual re-tooling.

Enclosed and low maintenance

Due to the design of the centre clamps, no chips remain in the clamping device. This means that all components are subject to less wear, which reduces maintenance to a minimum.

Short set up times

Gremotool clamping devices are all equipped with various connection options. No special versions for standard pallets are required to change the clamping devices, precision pins and screws are loosened and tightened again.

Large range of jaws

The jaws on all Gremotool centre clamps are interchangeable. From gripping jaws to soft jaws made of aluminium, no requirements remain unfulfilled for the demands placed on the workpieces.

Automating the process

If special requirements of automation are placed on the clamping devices, the Gremotool clamping devices are ideal. The clamping devices can be equipped with various interfaces, including those integrated directly into the clamping device. This allows the machining area of the machine to be utilised even more optimally.

Short delivery times

The short delivery times of jaws allow to work quickly and flexibly with the Gremotool range of jaws.

Get started immediately

A pair of gripper jaws is supplied with each clamping device at no extra cost, allowing you to clamp raw parts at no additional costs.

Product presentation

PMC-50 with Erowa ITS-148

pneumatic /
hydraulic

Gremotool system of jaws

- + interchangeable between series
- + quick change of jaws
- + protruding jaws possible

Enclosed design with valve

- + ideal chip flow
- + 3-fold clamping reliability
- + adjustable clamping force by



Centring precision $\pm 0.01\text{mm}$

- + precision for multi-axis machining
- + high repeat precision
- + reduces vibrations on the workpiece

Suitable with pallets of Erowa

- + designed for automation
- + deep for larger workpiece in machine
- + RFID-Chip attachable

Product presentation

2x SC-74 with Erowa UPC-320

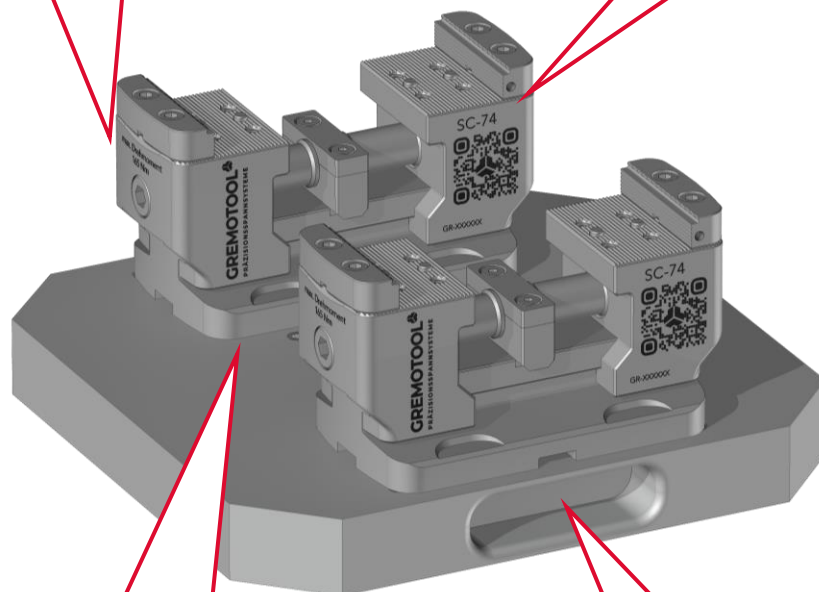
mechanical

Gremotool system of jaws

- + interchangeable between series
- + quick change of jaws
- + protruding jaws possible

High design

- + ideal chip flow
- + high accessibility
- + idealised clamping force



Centring precision $\pm 0.01\text{mm}$

- + precision for multi-axis machining
- + high repeat precision
- + reduces vibrations on the workpiece

Erowa Suitable with pallets of Erowa

- + e.g. on Erowa UPC-320
- + centre, left, right, left & right
- + fast, precise assembly from below

Product presentation

VC-74 vise modules with Erowa MTS-498

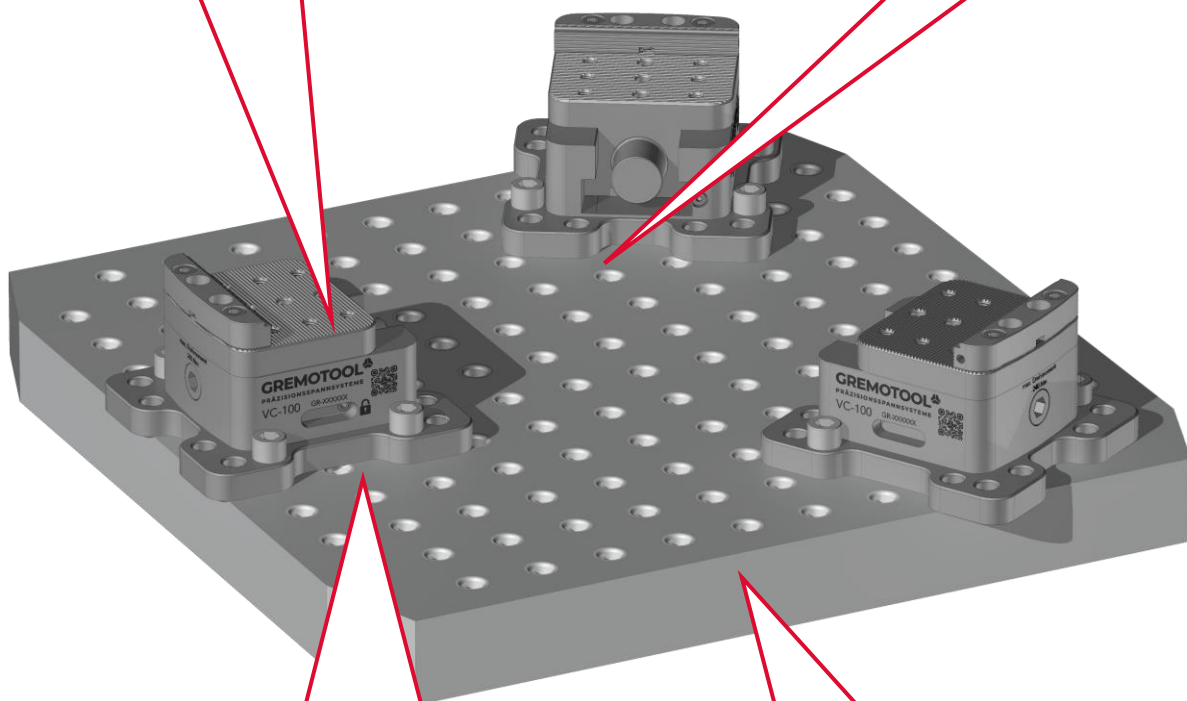
mechanical

Gremotool system of jaws

- + interchangeable between series
- + quick change of jaws
- + protruding jaws possible

Enclosed design

- + ideal chip flow
- + high accessibility
- + idealised clamping force



Modular design

- + Modules can be positioned individually
- + for 40mm und 50mm perforated grid
- + can be mounted by 30° for round workpieces

Suitable with pallets of Erowa

- + designed for automation
- + deep for larger workpiece in machine
- + RFID-Chip attachable

Product presentation

LC-74 with integrated Erowa ITS-148

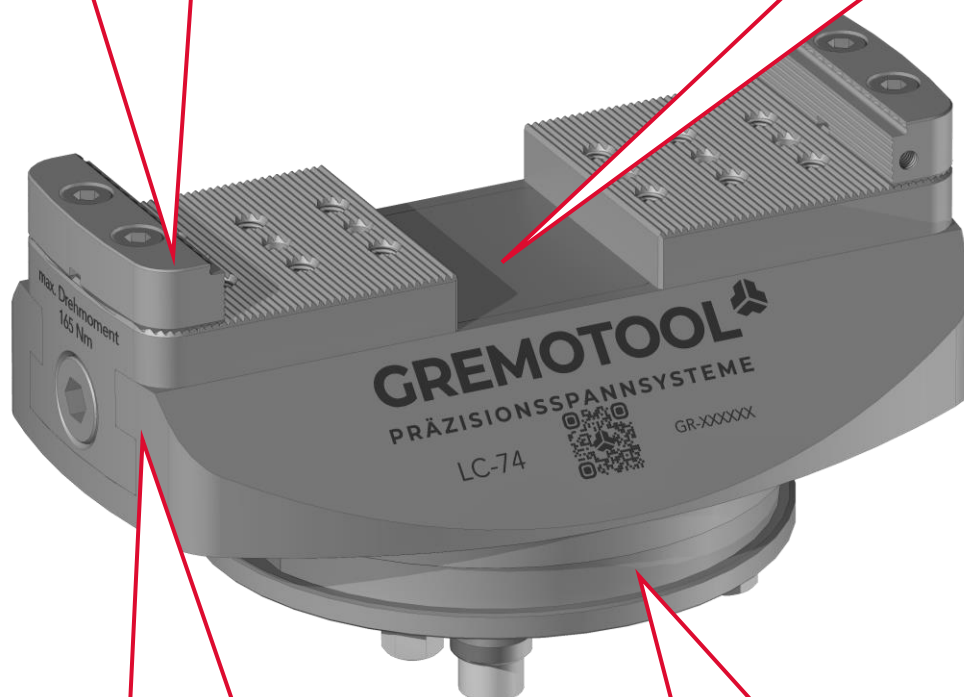
mechanical

Gremotool system of jaws

- + interchangeable between series
- + quick change of jaws
- + protruding jaws possible

Enclosed design

- + ideal chip flow
- + high accessibility
- + idealised clamping force



Centring precision $\pm 0.01\text{mm}$

- + precision for multi-axis machining
- + high repeat precision
- + reduces vibrations on the workpiece

Integrated pallet for ITS-148

- + designed for automation
- + deep for larger workpiece in machine
- + RFID-Chip attachable

Overview of products

Gremotool clamping devices with Erowa

	ITS-50	ITS-115	ITS-148	VPC 52 / 96
PMC / HMC 	-	-	 PMC-50	-
SC 	 SC-34 / 40	 SC-34 / 40 / 50 / 60	 SC-34 / 40 / 50 / 60 / 74	 SC-60 / 74 / 100 / 120
VC 	-	-	-	-
LC 	 LC-34 / 40	 LC-34 / 40 / 50 / 60	 LC-34 / 40 / 50 / 60 / 74	 LC-60 / 74 / 100 / 120 / 150
RC (Autumn 24)	-	-	-	-

Overview of products

Gremotool clamping devices with Erowa

	UPC-320	MTS-225	MTS-398/200 MTS-398/250 MTS-498/250
PMC / HMC 	 PMC / HMC-50 / 60 / 60I / 74	 PMC / HMC-60 / 60I / 74	 PMC / HMC-50 / 60 / 60I / 74 / 100 / 120
SC 	 SC-34 / 40 / 50 / 60 / 74 / 100 / 120	 SC-34 / 40 / 50 / 60 / 74 / 100	 SC-34 / 40 / 50 / 60 / 74 / 100 / 120
VC 	-	-	 VC-60 / 74 / 100 / 120 / 150
LC 	 LC-34 / 40 / 50 / 60 / 74 / 100 / 120	 LC-34 / 40 / 50 / 60 / 74 / 100	 LC-34 / 40 / 50 / 60 / 74 / 100 / 120 / 150
RC (Autumn 24)	-	-	-

Variant table

Erowa ITS-50 with SC

mechanical

The SC series can be mounted on the ITS-50 pallets from Erowa without modifications

The height of the SC series enables optimum accessibility for 5-axis machining on workpieces.

The large range of jaws also offers suitable jaws for any application.

For the exact data of the SC series, please get directly in touch with us or consult the SC catalogue.



SC-34 with Erowa ITS-50 Pallet



SC-40 with Erowa ITS-50 Pallet

Further variants can be requested directly by Gremotool.

The shown products and options are examples.
The rights by the respective products are the property of Erowa and/or Gremotool.

Variant table

Erowa ITS-50 with LC

mechanical

The LC series can be mounted on the ITS-50 pallets from Erowa without modifications.

Due to the enclosed design of the LC series, no chips remain on the clamping device.

The large range of jaws also offers suitable jaws for any application.

For the exact data of the LC series, please get directly in touch with us or consult the LC catalogue.



LC-34 with Erowa ITS-50 Pallet



LC-40 with Erowa ITS-50 Pallet

Further variants can be requested directly by Gremotool.

The shown products and options are examples.
The rights by the respective products are the property of Erowa and/or Gremotool.

Variant table

Erowa ITS-115 with SC

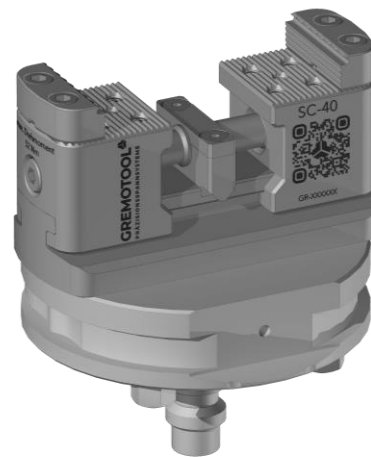
mechanical

The SC series can be mounted on Erowa ITS-115 pallets without modifications.

The height of the SC series enables optimum accessibility for 5-axis machining on workpieces.

The large range of jaws also offers suitable jaws for any application.

For the exact data of the SC series, please get in touch directly with us or consult the SC catalogue.



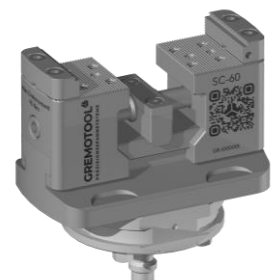
SC-40 with Erowa ITS-115 Pallet



SC-34 with Erowa ITS-115-Pallet



SC-50 with Erowa ITS-115-Pallet



SC-60 with Erowa ITS-115-Pallet

Further variants can be requested directly by Gremotool.

The shown products and options are examples.
The rights by the respective products are the property of Erowa and/or Gremotool.

Variant table

Erowa ITS-115 with LC

mechanical

The LC series can be mounted on the ITS-115 pallets from Erowa without modifications.

Due to the closed design of the LC series, no chips remain on the clamping device.

The large range of jaws also offers suitable jaws for any application.

For the exact data of the LC series, please get directly in touch with us or consult the LC catalogue.



LC-40 with Erowa ITS-115 Pallet



LC-34 with Erowa ITS-115-Pallet



LC-50 with Erowa ITS-115-Pallet



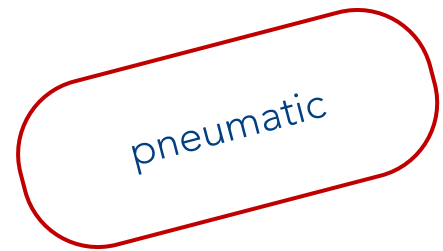
LC-60 with Erowa ITS-115-Pallet

Further variants can be requested directly by Gremotool.

The shown products and options are examples.
The rights by the respective products are the property of Erowa and/or Gremotool.

Variant table

Erowa ITS-148 with PMC



The PMC 50 is designed to fit the ITS-148 pallets of Erowa.

Pneumatically supplied from below through the pallet.

Using the reducing valve the clamping force can be individually adjusted to the workpiece.

The large range of jaws also offers suitable jaws for any application.

For the exact data of the PMC series, please get directly in touch with us or consult the PMC catalogue.



PMC-50 with Erowa ITS-148 Pallet

Further variants can be requested directly by Gremotool.

The shown products and options are examples.
The rights by the respective products are the property of Erowa and/or Gremotool.

Variant table

Erowa ITS-148 with SC

mechanical

The SC series can be mounted on the ITS-148 pallets from Erowa without any modifications.

The height of the SC series enables optimum accessibility for 5-axis machining on workpieces.

The large range of jaws also offers suitable jaws for any application.

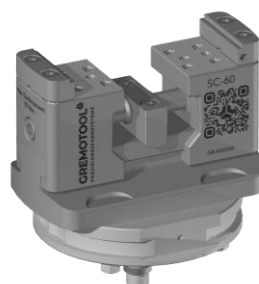
For the exact data of the SC series, please get directly in touch with us or consult the SC catalogue.



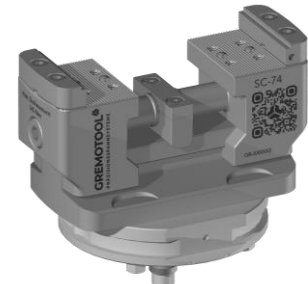
SC-50 with Erowa ITS-148 Pallet



2x SC-40 with Erowa ITS-148-Pallet



SC-60 with Erowa ITS-148 Pallet



SC-74 with Erowa ITS-148 Pallet

Further variants can be requested directly by Gremotool.

The shown products and options are examples.
The rights by the respective products are the property of Erowa and/or Gremotool.

Variant table

Erowa ITS-148 with LC

mechanical

The LC series can be mounted on the ITS-148 pallets from Erowa without any modifications.

Due to the closed design of the LC series, no chips remain on the clamping device.

The large range of jaws also offers suitable jaws for any application.

For the exact data of the LC series, please get directly in touch with us or consult the LC catalogue.



LC-50 with Erowa ITS-148 Pallet



2x LC-40 with Erowa ITS-148-Pallet



LC-60 with Erowa ITS-148 Pallet



LC-74 with Erowa ITS-148 Pallet

Weitere Varianten können direkt bei Gremotool angefragt werden.

The shown products and options are examples.
The rights by the respective products are the property of Erowa and/or Gremotool.

Variant table

Erowa VPC 52 / 96 with SC

mechanical

The VPC 52 / 96 clamping pins from Erowa can be mounted on the SC series without modifications.

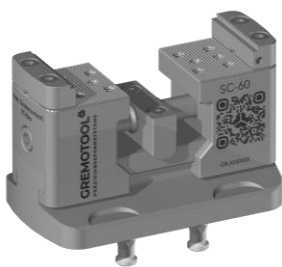
The height of the SC series enables optimum accessibility for 5-axis machining on workpieces.

The large range of jaws also offers suitable jaws for any application.

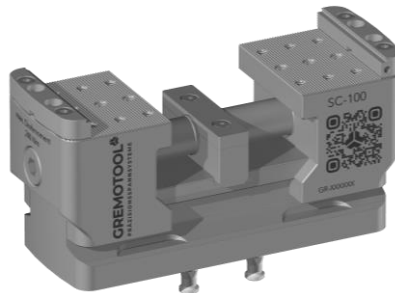
For the exact data of the SC series, please get directly in touch with us or consult the SC catalogue.



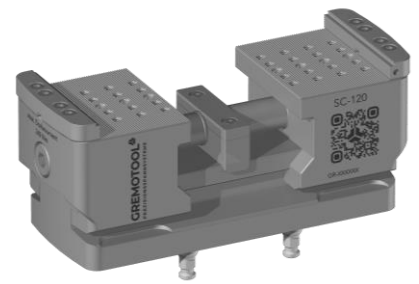
SC-74 with Erowa VPC 52 clamping pins



SC-60 with Erowa VPC 52 clamping pins



SC-100 with Erowa VPC 52 clamping pins



SC-120 with Erowa VPC 96 clamping pins

Further variants can be requested directly by Gremotool.

The shown products and options are examples.
The rights by the respective products are the property of Erowa and/or Gremotool.

Variant table

Erowa VPC 52 / 96 with LC

mechanical

The LC series can be mounted on the VPC 52 / 96 clamping pins from Erowa without modifications.

Due to the closed design of the LC series, no chips remain on the clamping device.

The large range of jaws also offers suitable jaws for any application.

For the exact data of the LC series, please get directly in touch with us or consult the LC catalogue.



LC-74 with Erowa VPC 52 clamping pins



LC-50 with Erowa VPC 52 clamping pins



LC-60 with Erowa VPC 52 clamping pins



LC-100 with Erowa VPC 52 clamping pins



LC-120 with Erowa VPC 96 clamping pins



LC-150 with Erowa VPC 96 clamping pins

Further variants can be requested directly by Gremotool.

The shown products and options are examples.
The rights by the respective products are the property of Erowa and/or Gremotool.

Variant table

Erowa UPC-320 with PMC/HMC

pneumatic /
hydraulic

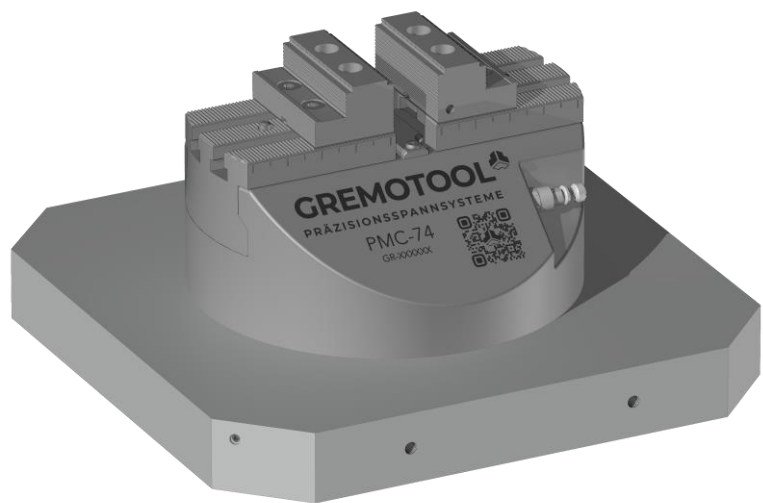
The PMC/HMC series is designed to fit the UPC-320 pallets of Erowa.

Pneumatically or hydraulically supplied from below through the pallet.

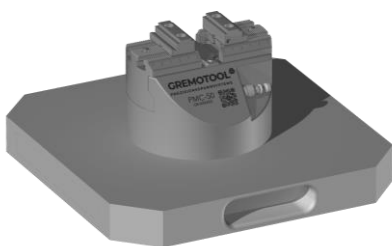
The clamping force of the PMC can be individually adjusted to the workpiece using the reducing valve.

The large range of jaws also offers suitable jaws for any application.

For the exact data of the PMC/HMC se-ries, please get directly in touch with us or consult the PMC/HMC catalogue.



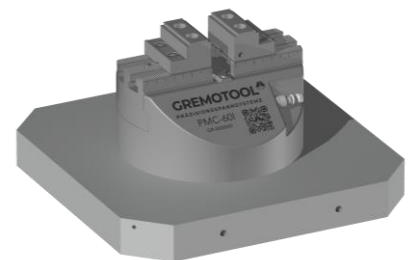
PMC-74 with Erowa UPC-320 Pallet



**PMC-50 with Erowa
UPC-320 Pallet**



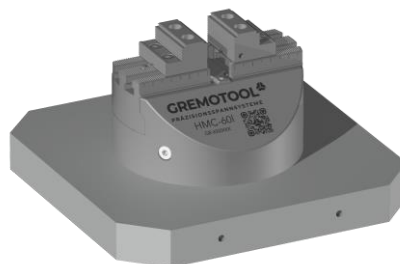
**PMC-60 with Erowa
UPC-320 Pallet**



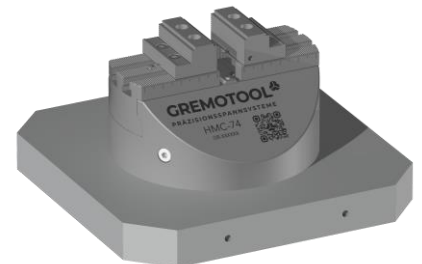
**PMC-60I (long) with Erowa
UPC-320 Pallet**



**HMC-60 with Erowa
UPC-320 Pallet**



**HMC-60I (long) with Erowa
UPC-320 Pallet**



**HMC-74 with Erowa
UPC-320 Pallet**

Further variants can be requested directly by Gremotool.

The shown products and options are examples.
The rights by the respective products are the property of Erowa and/or Gremotool.

Variant table

Erowa UPC-320 mit SC

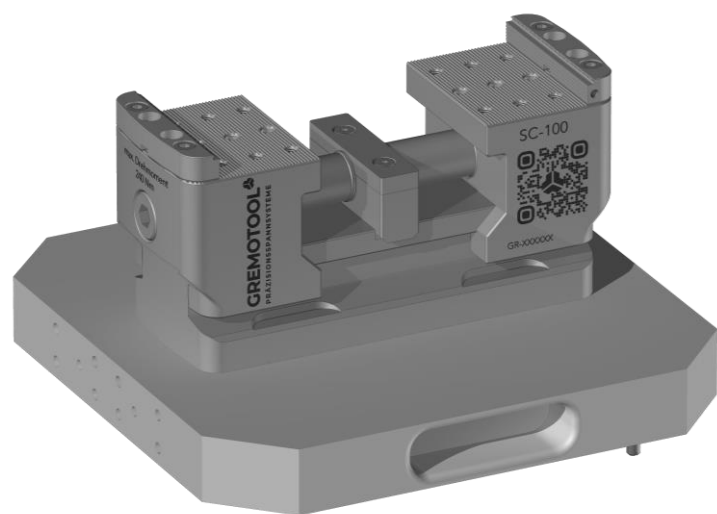
mechanical

The SC series can be mounted on the UPC-320 pallets from Erowa without any modifications.

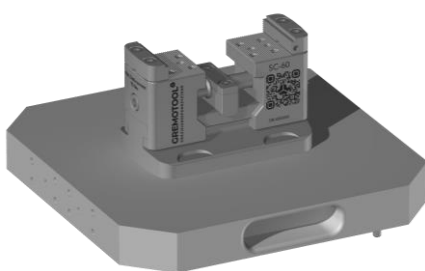
The height of the SC series enables optimum accessibility for 5-axis machining on workpieces.

The large range of jaws also offers suitable jaws for any application.

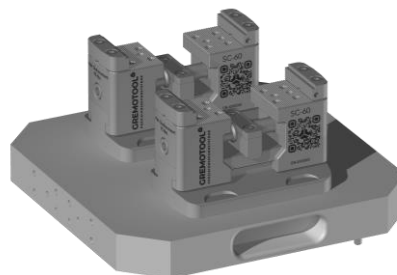
For the exact data of the SC series, please get directly in touch with us or consult the SC catalogue.



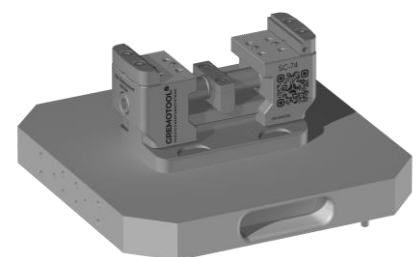
SC-100 with Erowa UPC-320 Pallet



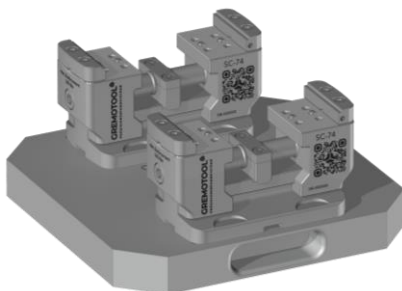
**SC-60 with Erowa
UPC-320-Pallet**



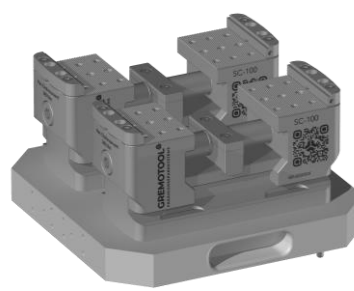
**2xSC-60 with Erowa
UPC-320-Pallet**



**SC-74 with Erowa
UPC-320-Pallet**



**2x SC-74 with Erowa
UPC-320-Pallet**



**2x SC-100 with Erowa
UPC-320-Pallet**

Further variants can be requested directly by Gremotool.

The shown products and options are examples.

The rights by the respective products are the property of Erowa and/or Gremotool.

mechanical

Variant table

Erowa UPC-320 with LC

The LC series can be mounted on the UPC-320 pallets from Erowa without any modifications.

Due to the closed design of the LC series, no chips remain on the clamping device.

The large range of jaws also offers suitable jaws for any application.

For the exact data of the LC series, please get directly in touch with us or consult the LC catalogue.



LC-100 with Erowa UPC-320 Pallet



**LC-60 with Erowa
UPC-320-Pallet**



**2x LC-60 with Erowa
UPC-320-Pallet**



**LC-74 with Erowa
UPC-320-Pallet**



**2x LC-74 with Erowa
UPC-320-Pallet**



**2x LC-100 with Erowa
UPC-320-Pallet**



**2x LC-120 with Erowa
UPC-320-Pallet**

Further variants can be requested directly by Gremotool.

The shown products and options are examples.
The rights by the respective products are the property of Erowa and/or Gremotool.

Variant table

Erowa MTS-225 with PMC/HMC

pneumatic /
hydraulic

The PMC/HMC series is designed to fit the MTS-225 pallet from Erowa.

This is supplied from below through the pallet using pneumatics or hydraulics.

Using the reducing valve the clamping force can be individually adjusted to the workpiece.

The large range of jaws also offers suitable jaws for any application.

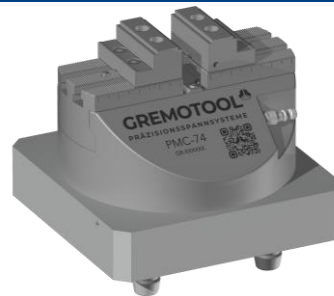
For the exact data of the PMC/HMC series, please get directly in touch with us or consult the PMC/HMC catalogue.



HMC-60 with Erowa MTS-225 Pallet



PMC-60I with Erowa MTS-225 Pallet



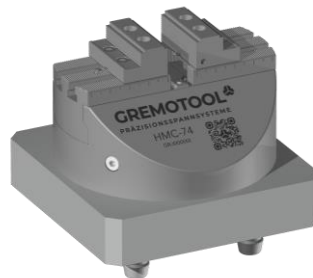
PMC-74 with Erowa MTS-225 Pallet



HMC-60 with Erowa MTS-225 Pallet



HMC-60I with Erowa MTS-225 Pallet



HMC-74 with Erowa MTS-225 Pallet

Further variants can be requested directly by Gremotool.

The shown products and options are examples.
The rights by the respective products are the property of Erowa and/or Gremotool.

Variant table

Erowa MTS-225 with SC

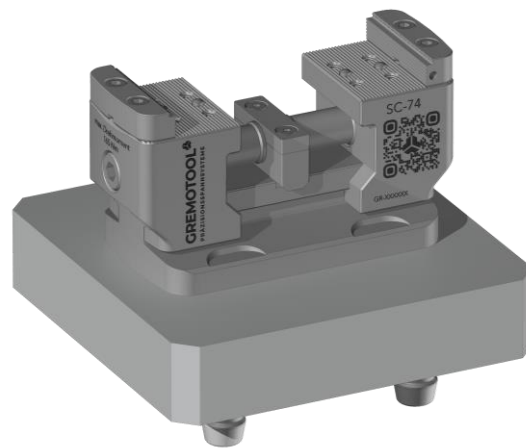
mechanical

The SC series can be mounted on the MTS-225 pallets from Erowa without any modifications.

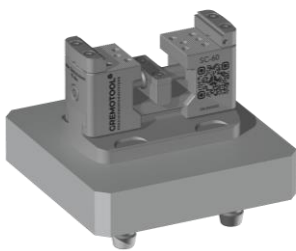
The height of the SC series enables optimum accessibility for 5-axis machining on workpieces.

The large range of jaws also offers suitable jaws for any application.

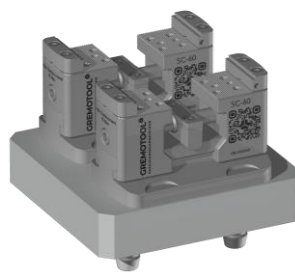
For the exact data of the SC series, please get directly in touch with us or consult the SC catalogue.



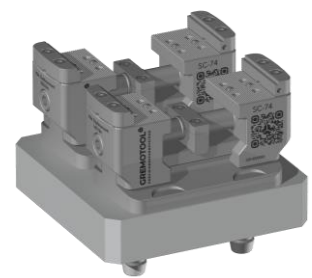
SC-74 with Erowa MTS-225 Pallet



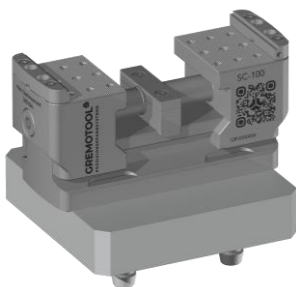
SC-60 with Erowa MTS-225-Pallet



2x SC-60 with Erowa MTS-225 Pallet



2x SC-74 with Erowa MTS-225 Pallet



SC-100 with Erowa MTS-225 Pallet

Further variants can be requested directly by Gremotool.

The shown products and options are examples.
The rights by the respective products are the property of Erowa and/or Gremotool.

Variant table

Erowa MTS-225 with LC

mechanical

The LC series can be mounted on the MTS-225 pallets from Erowa without any modifications.

Due to the closed design of the LC series, no chips remain on the clamping device.

The large range of jaws also offers suitable jaws for any application.

For the exact data of the LC series, please get directly in touch with us or consult the LC catalogue.



LC-74 with Erowa MTS-225 Pallet



**LC-60 with Erowa
MTS-225-Pallet**



**2x LC-60 with Erowa
MTS-225 Pallet**



**2x LC-74 with Erowa
MTS-225 Pallet**



**LC-100 with Erowa
MTS-225 Pallet**

Further variants can be requested directly by Gremotool.

The shown products and options are examples.
The rights by the respective products are the property of Erowa and/or Gremotool.

Variant table

Erowa MTS-398/498 with PMC/HMC

pneumatic /
hydraulic

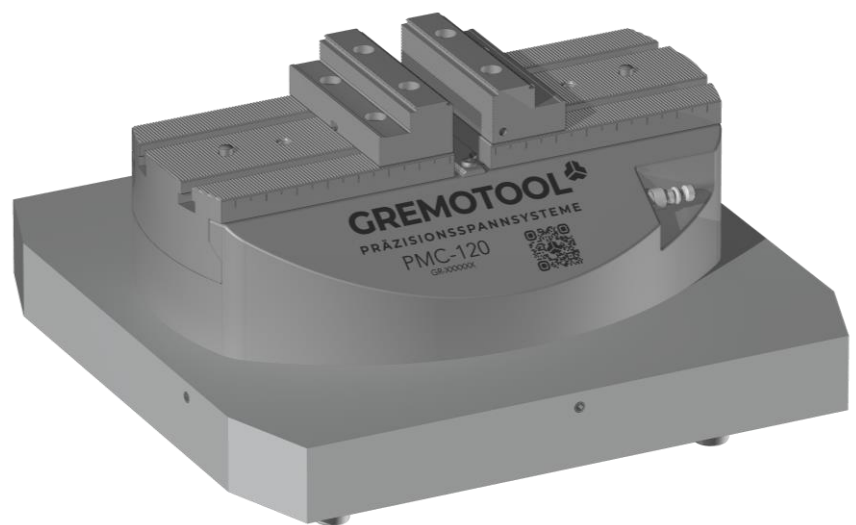
The PMC/HMC series is designed to fit the MTS-398/498 pallets of Erowa.

Pneumatically or hydraulically supplied from below through the pallet.

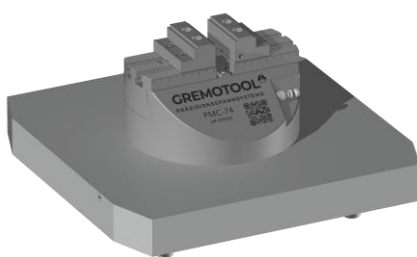
The clamping force of the PMC can be individually adjusted to the workpiece using the reducing valve.

The large range of jaws also offers suitable jaws for any application.

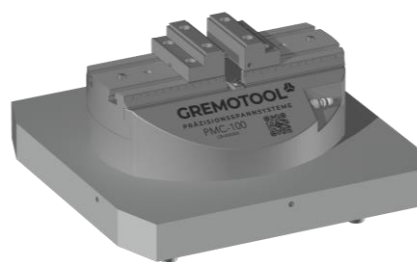
For the exact data of the PMC/HMC se-ries, please get directly in touch with us or consult the PMC/HMC catalogue.



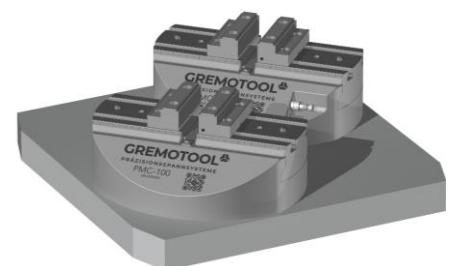
PMC-120 with Erowa MTS-398 Pallet



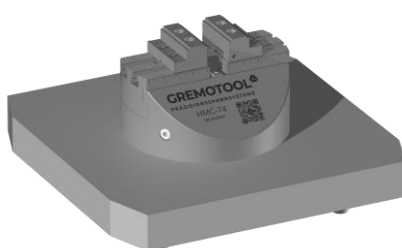
**PMC-74 with Erowa
MTS-398 Pallet**



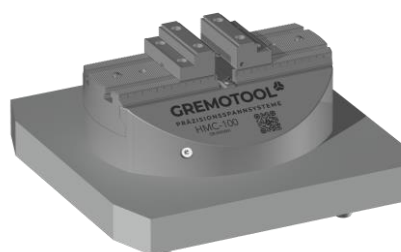
**PMC-100 with Erowa
MTS-398 Pallet**



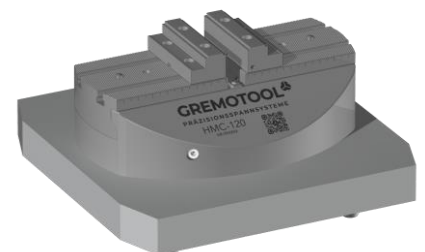
**2x PMC-100 with Erowa
MTS-498 Pallet**



**HMC-74 with Erowa
MTS-398 Pallet**



**HMC-100 with Erowa
MTS-398 Pallet**



**HMC-120 with Erowa
MTS-398 Pallet**

Further variants can be requested directly by Gremotool.

The shown products and options are examples.

The rights by the respective products are the property of Erowa and/or Gremotool.

Variant table

Erowa MTS-398/498 with SC

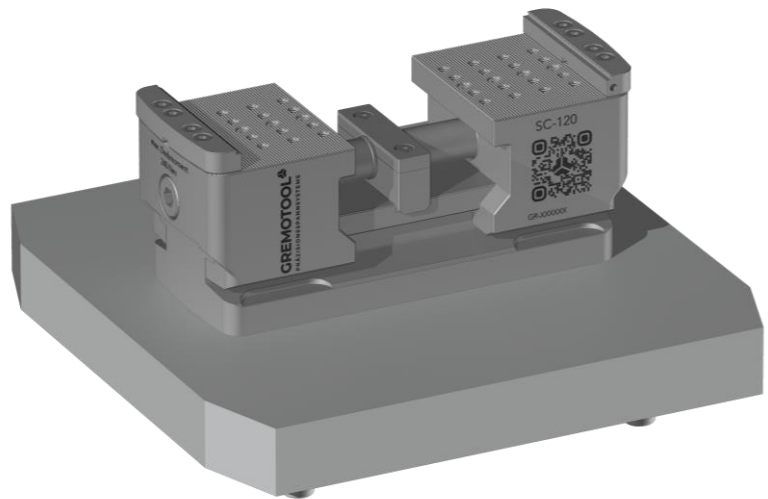
mechanical

The SC series can be mounted on the MTS-398/498 pallets from Erowa without any modifications.

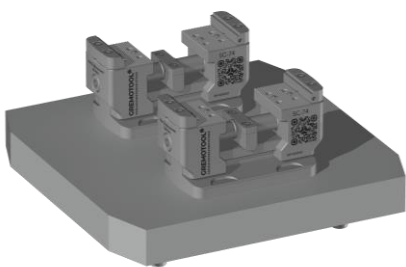
The height of the SC series enables optimum accessibility for 5-axis machining on workpieces.

The large range of jaws also offers suitable jaws for any application.

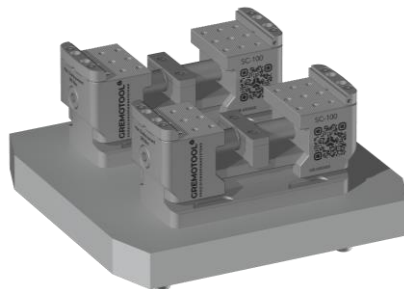
For the exact data of the SC series, please get directly in touch with us or consult the SC catalogue.



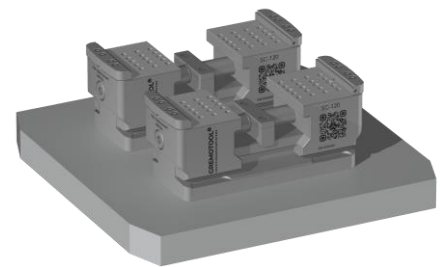
SC-120 with Erowa MTS-398 Pallet



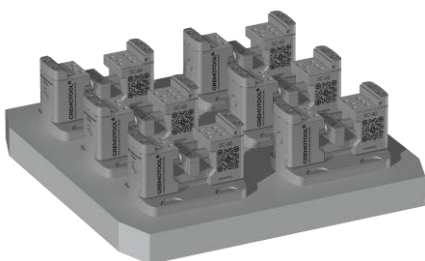
**2x SC-74 with Erowa
MTS-398 Pallet**



**2x SC-100 with Erowa
MTS-398 Pallet**



**2x SC-120 with Erowa
MTS-498 Pallet**



**6x SC-60 with Erowa
MTS-498 Pallet**

Further variants can be requested directly by Gremotool.

The shown products and options are examples.
The rights by the respective products are the property of Erowa and/or Gremotool.

Variant table

Erowa MTS-398/498 with VC

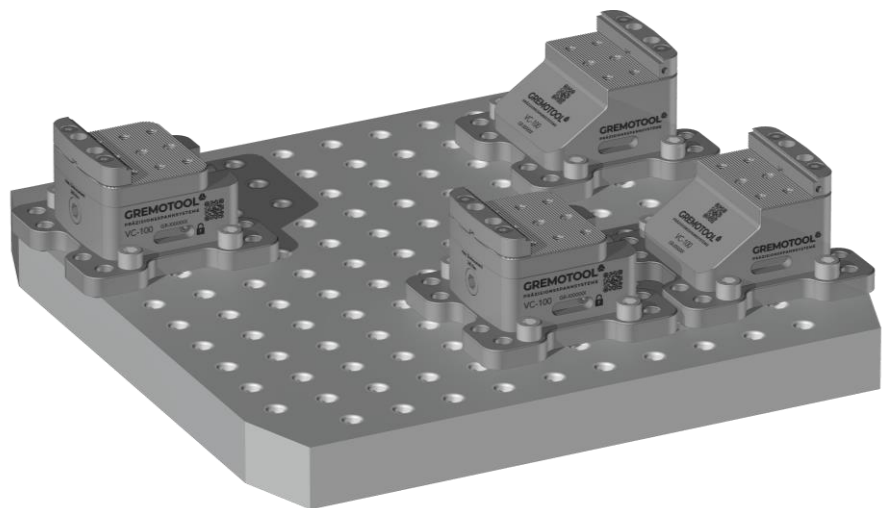
mechanical

The VC series can be mounted on the bore hole grid panels and on the MTS-398/498 pallets from Erowa without modifications.

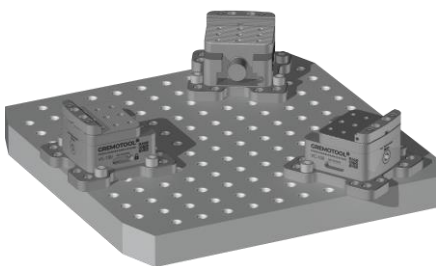
The modular design of the clamping system allows the clamping device to be customised to the respective application.

The large range of jaws also offers suitable jaws for any application.

For the exact data of the VC series, please get directly in touch with us or consult the VC catalogue.



2x VC-100 with Erowa MTS-498 Pallet



**3x VC-100 with Erowa
MTS 498 Pallet**

Further variants can be requested directly by Gremotool.

The shown products and options are examples.
The rights by the respective products are the property of Erowa and/or Gremotool.

Variant table

Erowa MTS-398/498 with LC

mechanical

The LC series can be mounted on MTS-398/498 pallets from Erowa without any modifications.

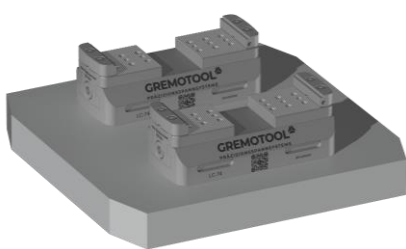
Due to the closed design of the LC series, no chips remain on the clamping device.

The large range of jaws also offers suitable jaws for any application.

For the exact data of the LC series, please get directly in touch with us or consult the LC catalogue.



LC-120 with Erowa MTS-398 Pallet



2x LC-74 with Erowa MTS-398 Pallet



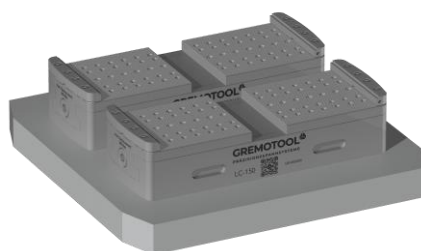
2x LC-100 with Erowa MTS-398 Pallet



2x LC-120 with Erowa MTS-398 Pallet



LC-150 with Erowa MTS-498 Pallet



2x LC-150 with Erowa MTS-498 Pallet



6x LC-60 with Erowa MTS-498 Pallet

Further variants can be requested directly by Gremotool.

The shown products and options are examples.
The rights by the respective products are the property of Erowa and/or Gremotool.

Applications

Zero-point clamping systems

The Erowa centring elements can be attached directly to the clamping system to generate fewer interfaces.

If further requirements are placed on the clamping systems, these can be integrated into the pallet geometries. This frees up several millimetres of machining space without compromising the functionality or automation capability of the clamping devices.

Special dimensions are another way of optimising the space required for production.

For these suggested solutions, please get directly in touch with us.



LC-60 with integrated Erowa ITS-148 Pallet



LC-34 with integrated Erowa ITS-50 Pallet



LC-74 with integrated Erowa ITS-148 Pallet



SC-40b with wide base on Erowa ITS-115 Pallet

Further variants can be requested directly by Gremotool.

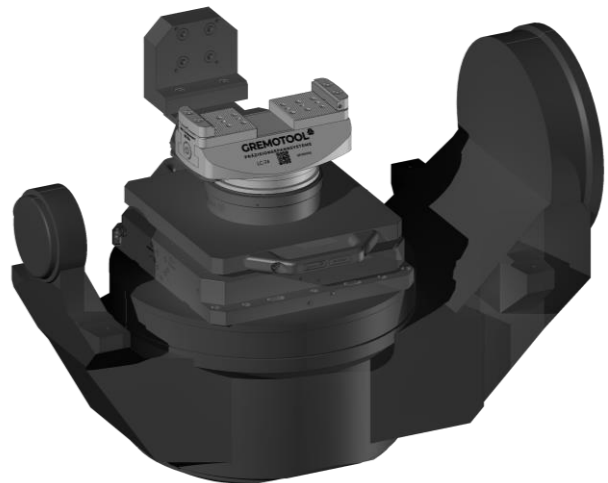
The shown products and options are examples.
The rights by the respective products are the property of Erowa and/or Gremotool.

Applications

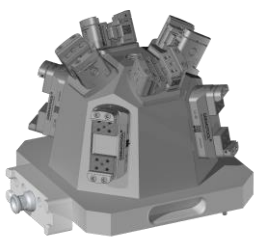
Gremotool Fixture

Today's cost-effective production requires flexible solutions for maximum efficiency. We can contribute to maximum utilisation of the processing machine with towers, prisms, or pyramids.

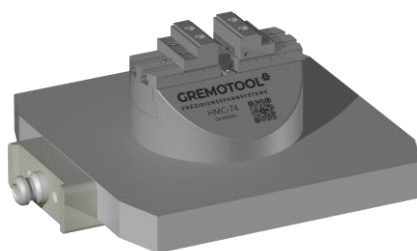
For suggested solutions in multiple clamping, please get directly in touch with us.



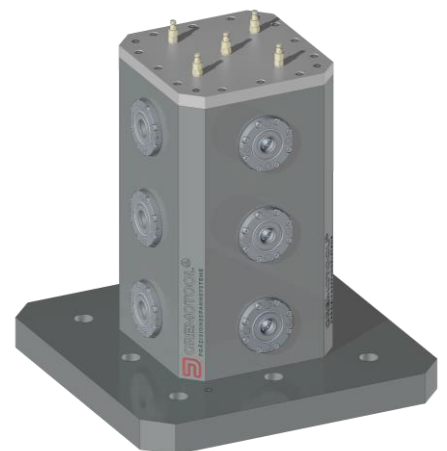
2x LC-150k (short) with Prism with Erowa ITS-148 & UPC-320 Pallet



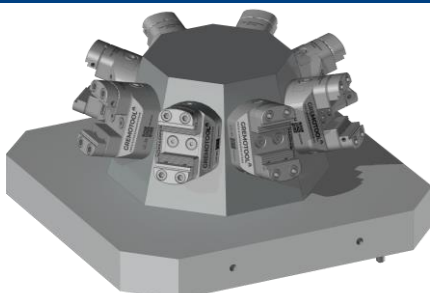
4x SC-50k (short) & LC-40 with Pyramid on Erowa UPC-320 Pallet



PMC-74 with Erowa MTS-398 Pallet & Gripper Coupling



Tower with MTS zero-point chuck



8x LC-34 with Pyramid on Erowa UPC-320 Pallet

Further variants can be requested directly by Gremotool.

The shown products and options are examples.
The rights by the respective products are the property of Erowa and/or Gremotool.

Accessories

Gremotool range of jaws

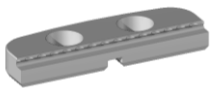
Each clamping system is supplied with a pair of gripper jaws allowing to clamp unmachined parts at no additional costs.

Jaw width [mm]		34	40	50	60	74	100	120	150
SC-gripper-jaw flat	Nr. 837110	X	X	X	X	X	X	X	X
SC-gripper jaw	Nr. 837150	X	X	X	X	X	X	X	X
Standard gripper jaw	Nr. 837250	X	X	X	X	X	X	X	X
High gripper jaw	Nr. 837300	X	X	X	X	X	X	X	X
Combi jaw	Nr. 837350	X	X	X	X	X	X	X	X
Automation gripper jaw	Nr. 837380	X	X	X	X	X	X	X	X
Automation step jaw	Nr. 837400	X	X	X	X	X	X	X	X
Step jaw flat	Nr. 837410	X	X	X	X	X	X	X	X
Standard step jaw	Nr. 837450	X	X	X	X	X	X	X	X
Prism jaw	Nr. 837500	X	X	X	X	X	X	X	X
Soft jaw Aluminium	Nr. 837702	X	X	X	X	X	X	X	X
Soft jaw Steel	Nr. 837703	X	X	X	X	X	X	X	X

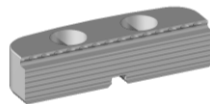
For the exact data of the jaws, please consult the jaw catalogue.

Accessories

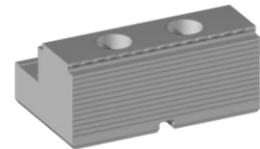
Gremotool range of jaws



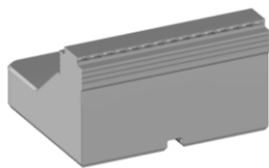
Nr. 837110



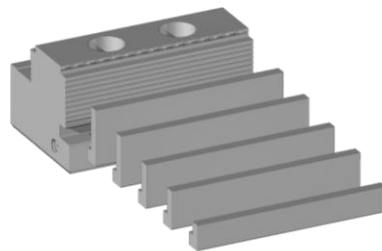
Nr. 837150



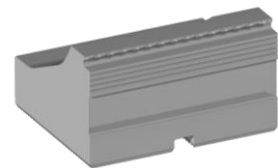
Nr. 837250



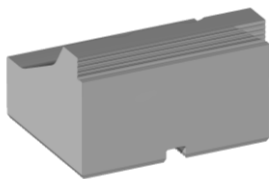
Nr. 837300



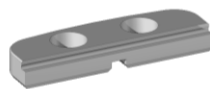
Nr. 837350



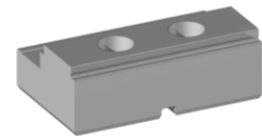
Nr. 837380



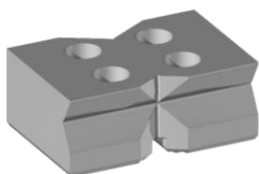
Nr. 837400



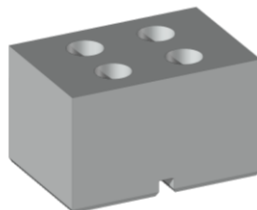
Nr. 837410



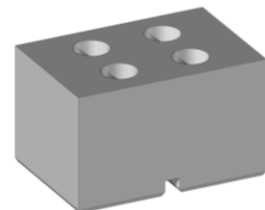
Nr. 837450



Nr. 837500



Nr. 837702



Nr. 837703



Imprint

Gremotool GmbH
Wilerstrasse 3
CH-9200 Gossau
Schweiz

www.gremotool.ch
info@gremotool.ch
+41 (0)71 930 03 90

Our general terms and conditions apply, which can be accessed at www.gremotool.ch.

Further catalogues can be downloaded from the website www.gremotool.ch.

Commercial Register:
UID-Nr. CHE-498.310.590

This document is protected by copyright. All rights reserved. Any use, even partial use, in particular publication, duplication, distribution, reproduction, processing and/or modification, requires the prior written authorisation of Gremotool GmbH. Misprints, errors, and technical changes reserved.

Publication May 2024, 1st Edition

