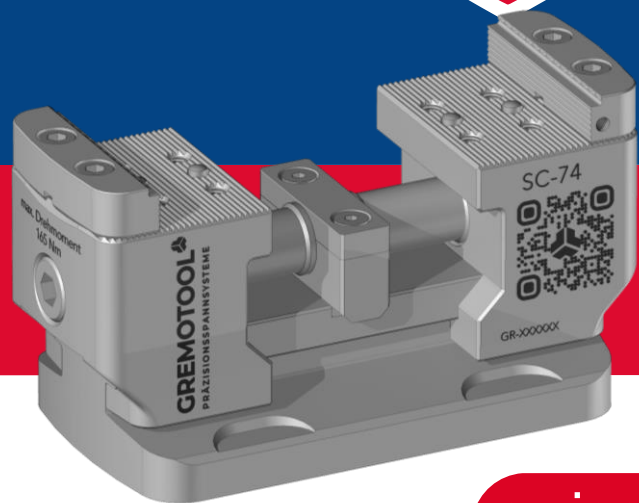


GREMOTOOL

PRÄZISIONSSPANNSYSTEME

SC-Series



swiss made 



GREMOTOOL
Precision Clamping Systems

Wilerstrasse 3
CH-9200 Gossau

info@gremotool.ch
www.gremotool.ch

Telefon +41 (0)71 930 03 90

Overview

SC-Series

Product presentation	3
Overview of size options	6
Sizing guide	7
Torque range	9
Dimension	11
Applications	18
Zero-point clamping system	18
Fixture	19
Accessories	20
Jaws	20
Automation Solutions	22
Impressum	24

Product presentation

SC-Series

With the SC series, you enable your production to machine workpieces from 5 sides without reclamping. This eliminates the need for additional clamping, which significantly reduces set-up times and increases the accuracy of the elements. The SC series is ideal for clamping in 5-axis machining centers, the advantages are obvious.



Product presentation

Benefits of the SC-Series

Clamping Force

The high clamping forces of the SC series can be influenced by the torque applied to the spindle. This allows you to clamp plastic workpieces without deformation and forged parts with a secure hold without destroying the clamp.

Centering precision

The special spindle and construction of the SC series ensure the user precise centering of +/- 0.01 mm in the center of the clamp. This means that the workpiece is still on the same place, which does not change the zero point.

Accessibility

The height of the clamp makes it possible to finish the workpiece from five sides in one clamping operation without the spindle colliding with the machine table. In addition, the rotationally symmetrical design of the clamp ensures that the orientation of the clamp is irrelevant for the machining process.

Compact

The compact clamp fits in any machine or on any base plate. The clamps are easy to replace by hand due to their low weight.

Low maintenance

Thanks to the design, the chips do not remain anywhere in the clamp. The clamp can therefore be operated with low maintenance.

Short set-up times

The SC series can be equipped with various connection options. The standard base from Gremotool is suitable for grooved tables and pallet systems. Solutions for perforated grid plates and clamping device handling can also be offered.

Versatility

The SC series can be used as a fixed jaw clamp or as a center clamp. This only requires a small modification on the clamp.

Thanks to the principle of the center clamp, several clamps can be placed next to each other to securely clamp long workpieces.

With a central jaw, the SC series can be transformed into a two-workpiece clamp.

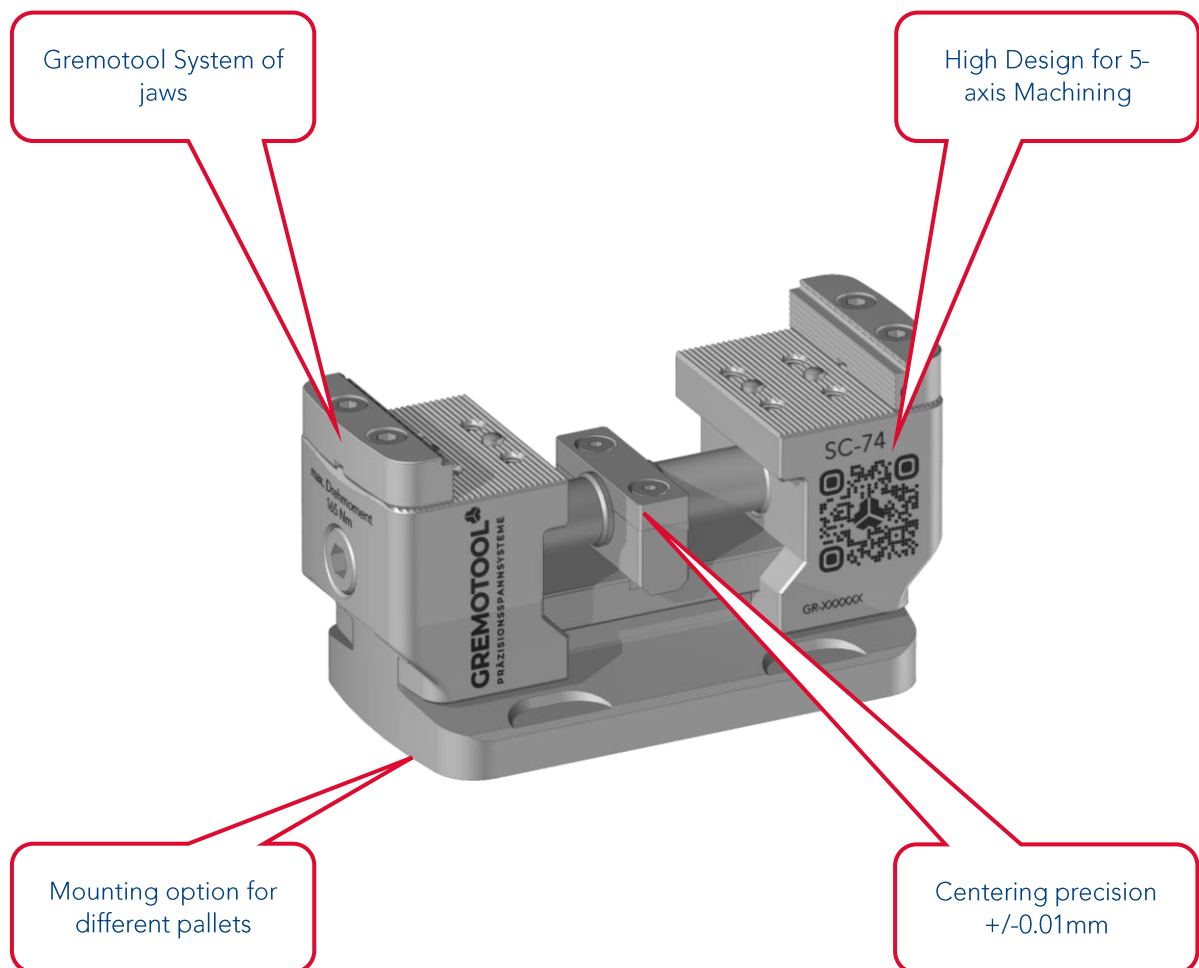
Large range of jaws

The entire Gremotool jaws can be used on the SC series from gripping to soft jaws made of aluminium, no wishes remain unfulfilled for workpiece clamping requirements.

The jaws are equipped with the uniform Gremotool serration. This means you can change the jaws very fast.

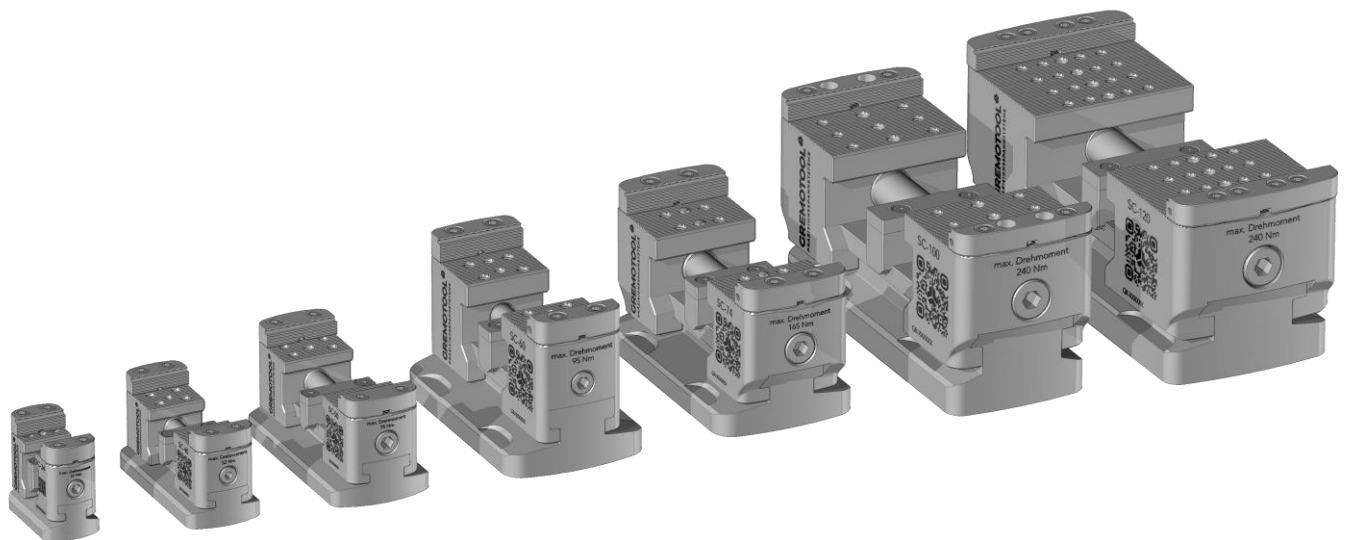
Product presentation

Benefits of the SC-Series



Overview of size options

SC-Series



Sizing guide

SC-Series



SC-Size		SC-34	SC-40	SC-50	SC-60
Jaw width	[mm]	34	40	50	60
Clamping range	[mm]	0-36	0-86	0-106	0-128
Support height *	[mm]	62	62	71	105
Max. Torque range	[Nm]	52	52	95	95
Max. Clamping Force	[kN]	15	15	25	25
Total length	[mm]	70	120	148	170
Total width	[mm]	40	52	70	100
Total height **	[mm]	65	65	74	108
Spanner width	[mm]	6	6	8	8
Mass	[kg]	0.8	1.7	3.7	7.3
Fixed jaw possible		No	No	No	Yes

* With standard SC-gripper jaw

** without jaw

Sizing guide

SC-Series



SC-Size		SC-74	SC-100	SC-120
Jaw width	[mm]	74	100	120
Clamping range	[mm]	0-156	0-228	0-270
Support height *	[mm]	105	130	130
Max. Torque range	[Nm]	165	240	240
Max. Clamping Force	[kN]	45	65	65
Total length	[mm]	200	272	314
Total width	[mm]	100	100	120
Total height **	[mm]	108	133	133
Spanner width	[mm]	10	12	12
Mass	[kg]	9.5	18.4	26.5
Fixed jaw possible		Yes	Yes	Yes

* With standard SC-gripper jaw

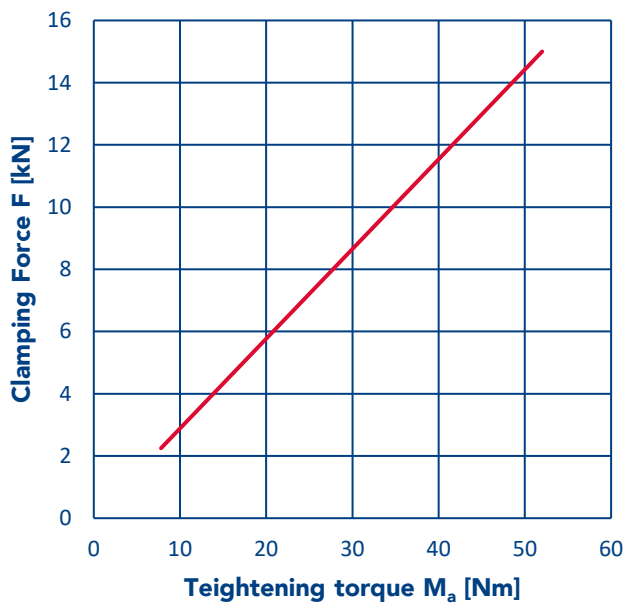
** without jaw

Torque range

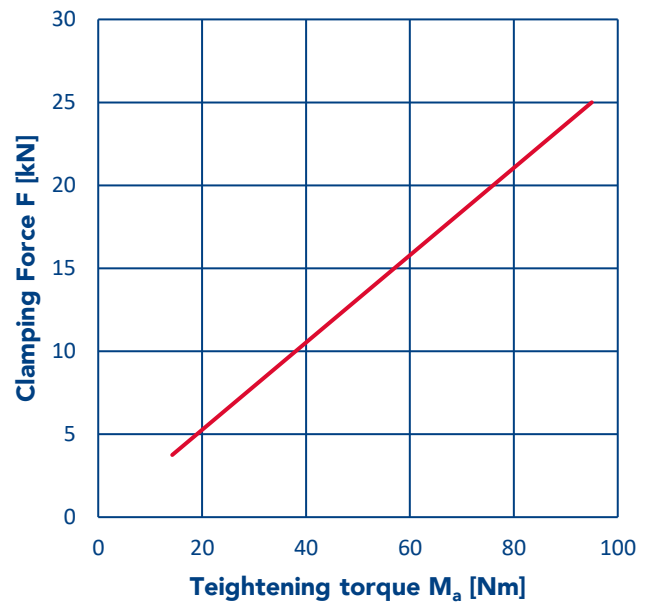
SC-Series



SC-34 / SC-40



SC-50 / SC-60

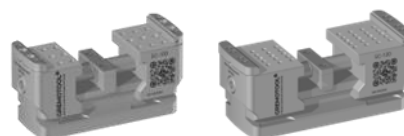


M_a max.	52 Nm
M_a min.	7.8 Nm
F max.	15 kN
F min.	2.25 kN

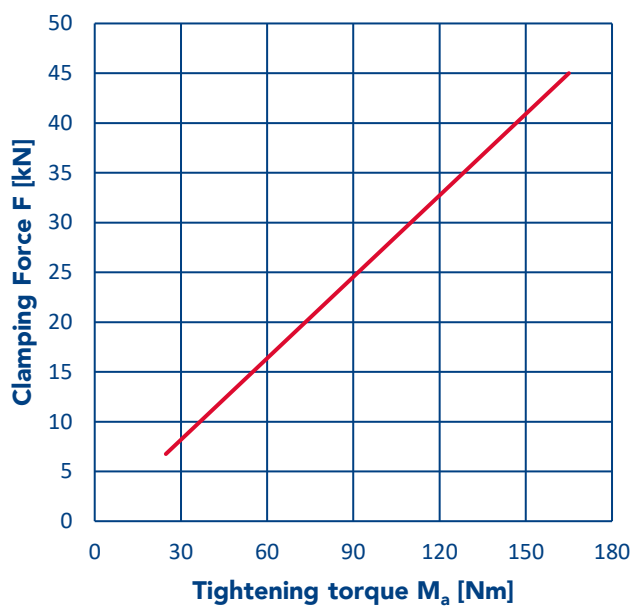
M_a max.	95 Nm
M_a min.	14.25 Nm
F max.	25 kN
F min.	3.75 kN

Torque range

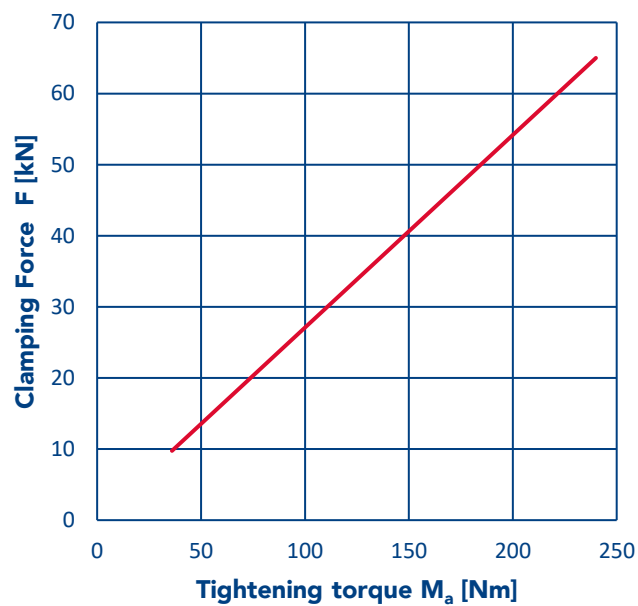
SC-Series



SC-74



SC-100 / SC-120

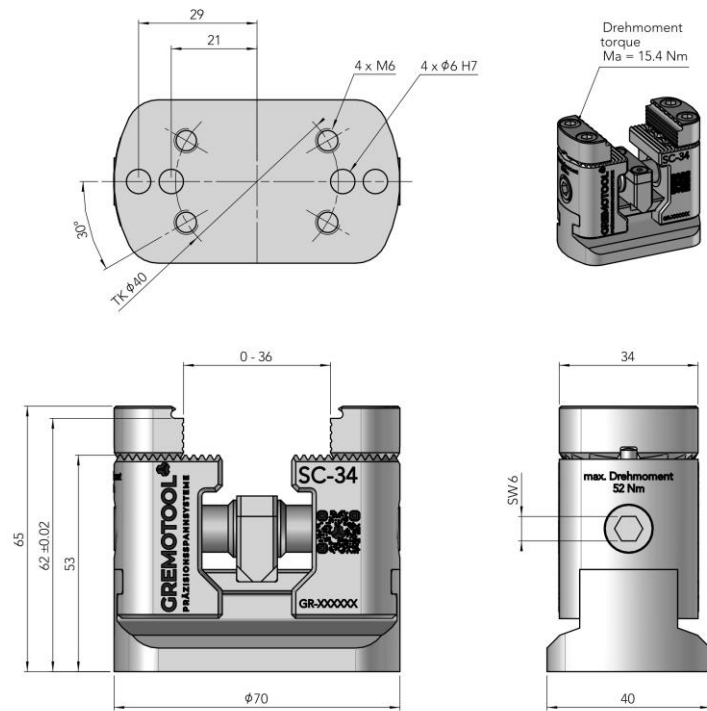


M_a max.	165 Nm
M_a min.	24.75 Nm
F max.	45 kN
F min.	6.75 kN

M_a max.	240 Nm
M_a min.	36 Nm
F max.	65 kN
F min.	9.75 kN

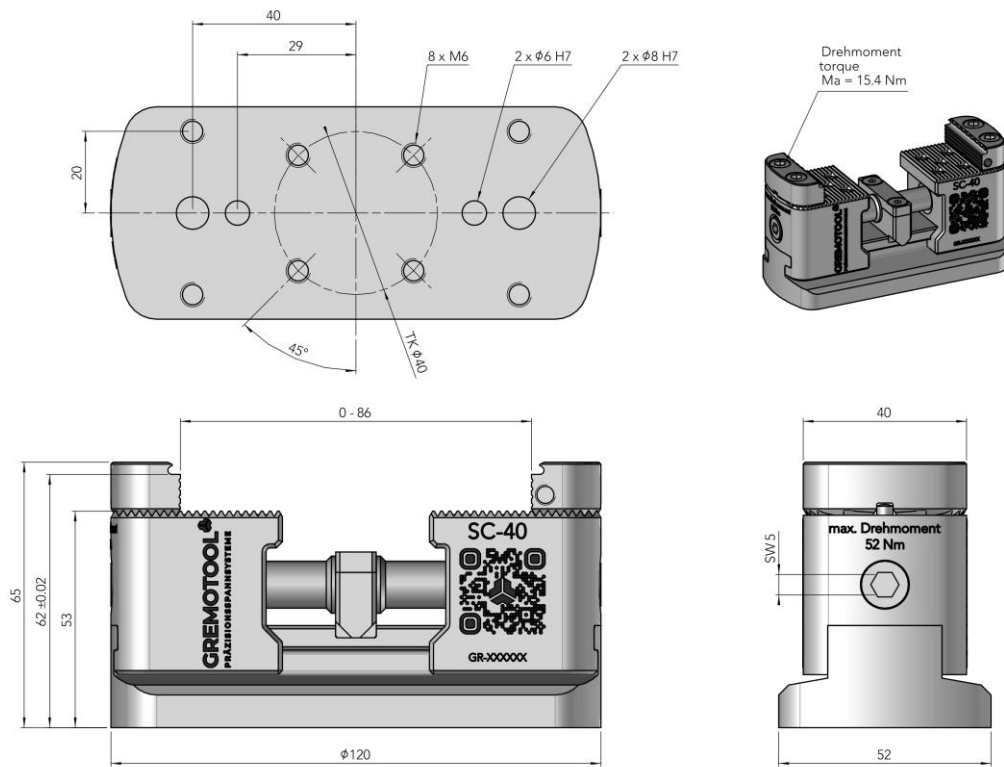
Dimension

SC-34



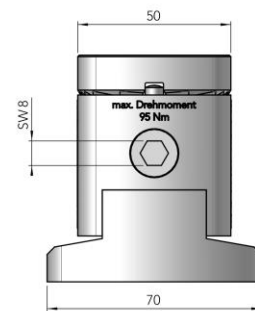
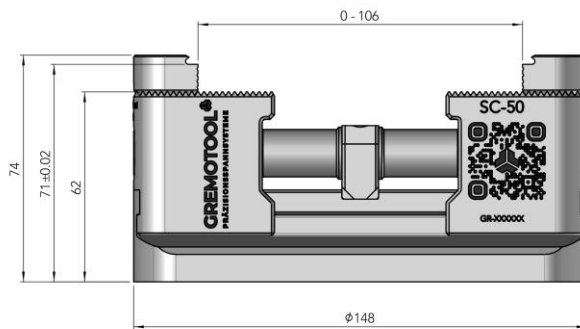
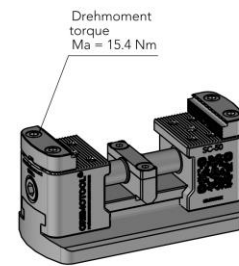
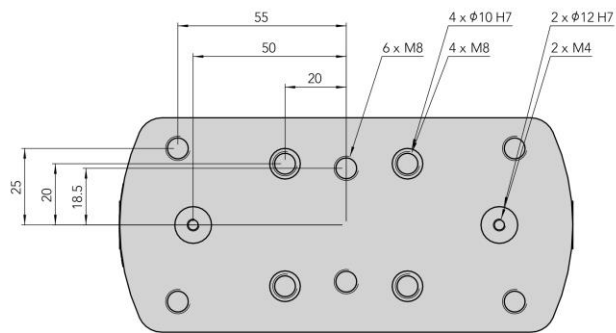
Dimension

SC-40



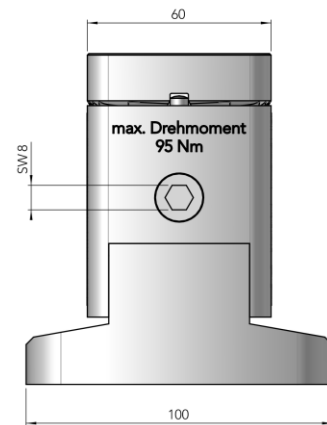
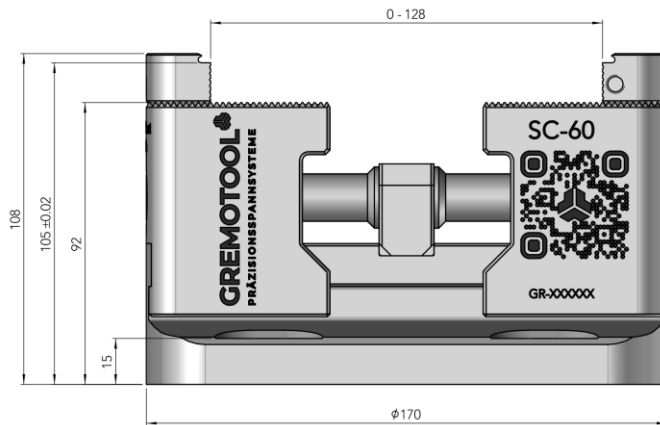
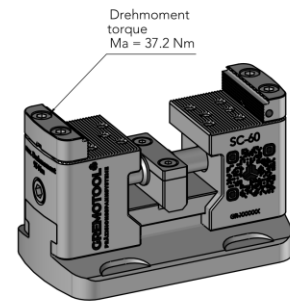
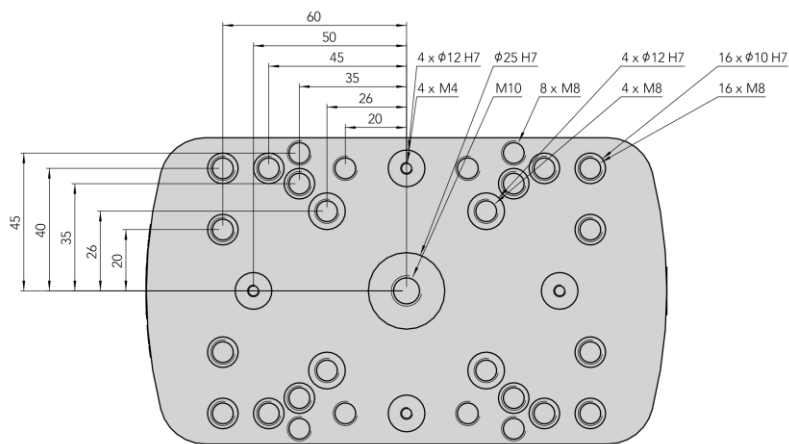
Dimension

SC-50



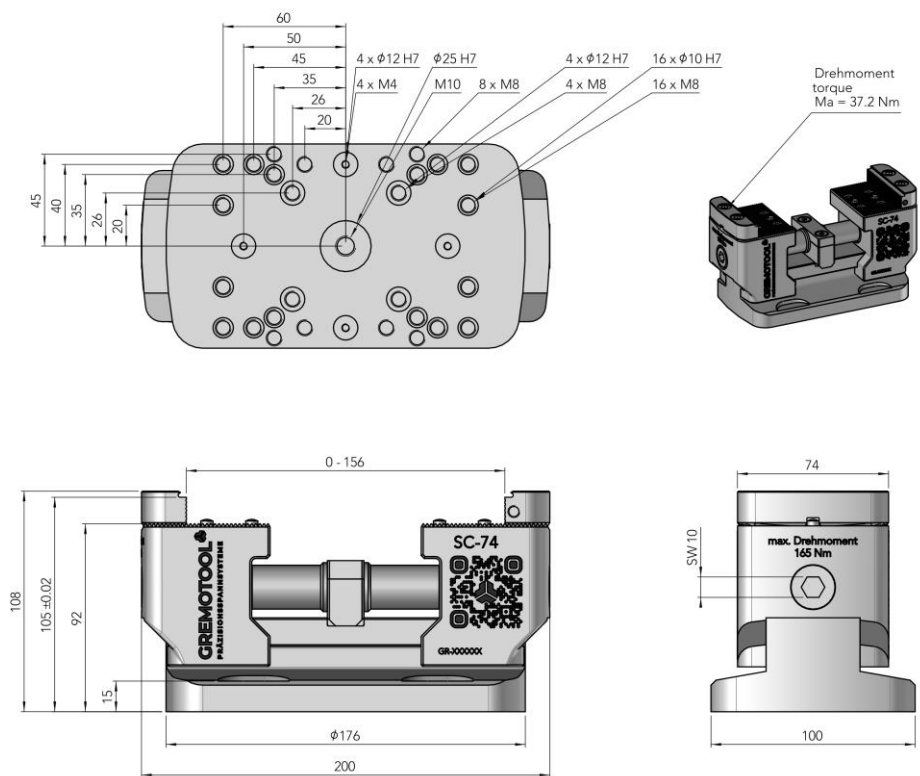
Dimension

SC-60



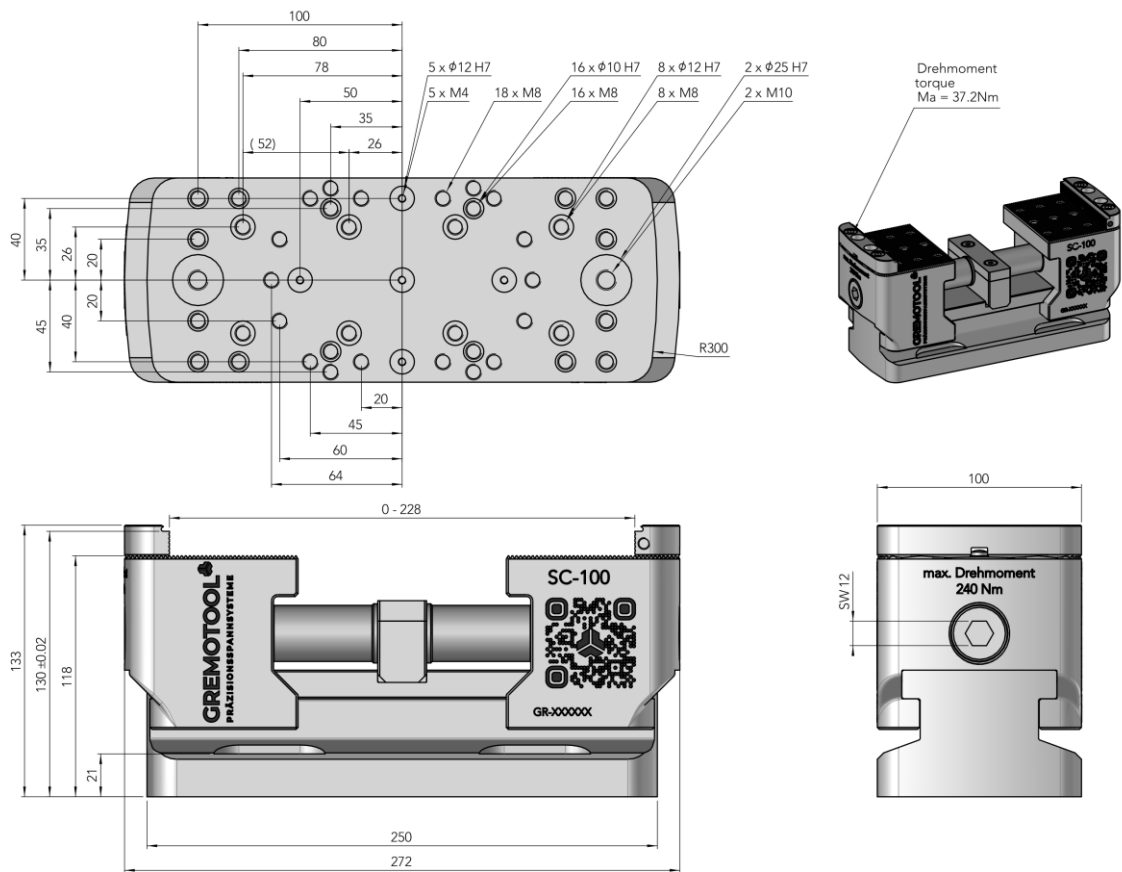
Dimension

SC-74



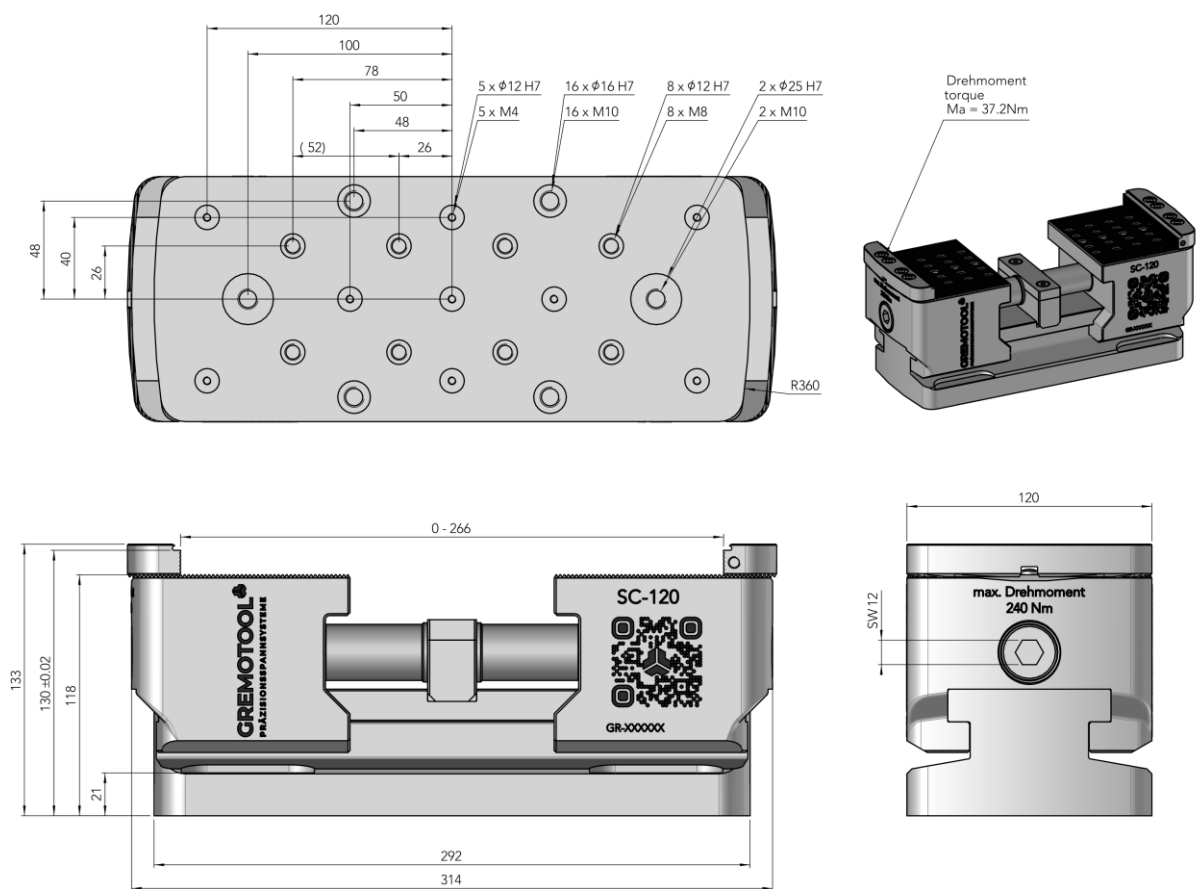
Dimension

SC-100



Dimension

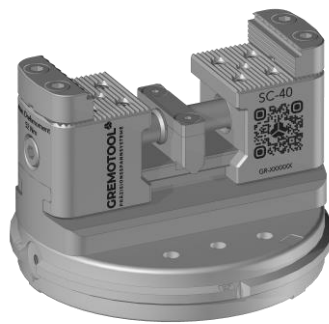
SC-120



Applications

Zero-point clamping system

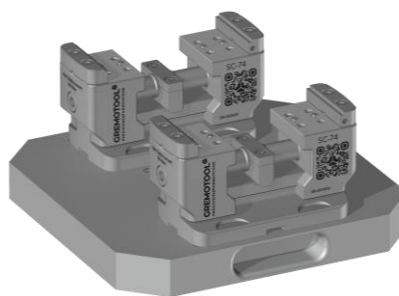
The basic bodies of the SC series make it possible to use many of the common pallet systems. For this purpose, only 2 fitting holes are required to align the SC correctly on the pallet.



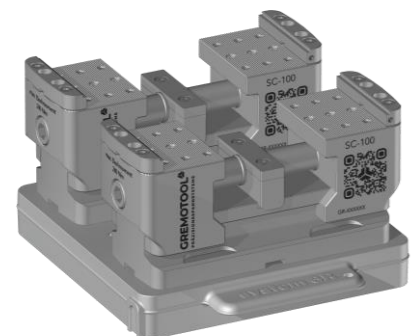
Clamping Device: 1x SC-40
Zero-point clamping System: GPS-120



Clamping Device: 1x SC-50
Zero-point clamping System: ITS-148



Clamping Device: 2x SC-74
Zero-point clamping System: UPC-320

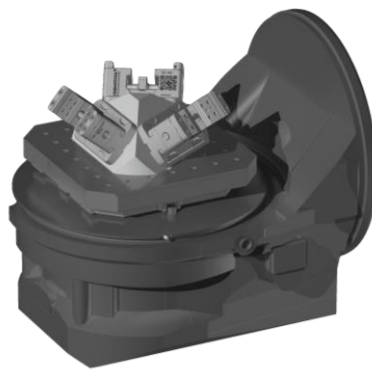


Clamping Device: 2x SC-100
Zero-point clamping System: Dynafix

Applications

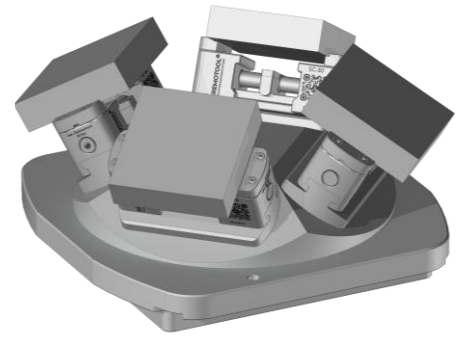
Fixture

To achieve maximum flexibility and running time on the processing machines, you can use the SC series on pyramids, towers, or prisms. The elevated design and the large selection of jaws allows to maximise machine capacity.



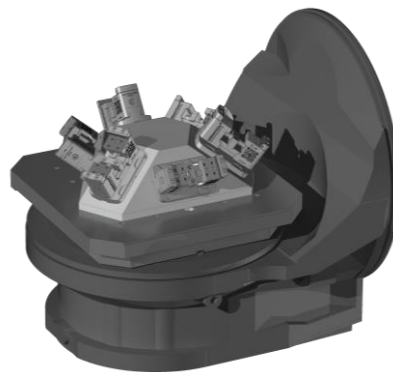
Clamping Device:
Fixture:

**3x SC-60
Pyramid**



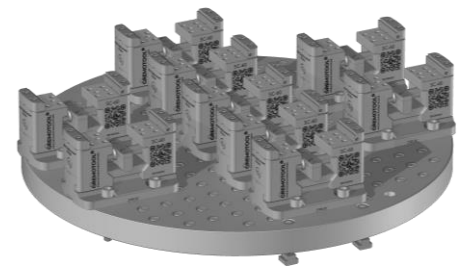
Clamping Device:
Fixture:

**4x SC-50
Pyramid**



Clamping Device:
Fixture:

**6x SC-60
Pyramid**



Clamping Device:
Fixture:

**9x SC-60f
Perforated grid
plate**

Accessories

Jaws

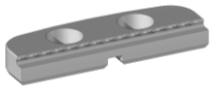
Pair of SC gripping jaws is included with delivery of Smart Clamp, so, you can clamp raw parts at no additional costs.

Width of jaws [mm]		34	40	50	60	74	100	120	150
SC-gripper jaw flat	Nr. 837110	X	X	X	X	X	X	X	
SC-gripper jaw	Nr. 837150	X	X	X	X	X	X	X	
Standard gripper jaw	Nr. 837250	X	X	X	X	X	X	X	
Height gripper jaw	Nr. 837300	X	X	X	X	X	X	X	
Combi jaw	Nr. 837350	X	X	X	X	X	X	X	
Automation gripper jaw	Nr. 837380	X	X	X	X	X	X	X	
Automation step jaw	Nr. 837400	X	X	X	X	X	X	X	
Step jaw flat	Nr. 837410	X	X	X	X	X	X	X	
Standard step jaw	Nr. 837450	X	X	X	X	X	X	X	
Prism jaw	Nr. 837500	X	X	X	X	X	X	X	
Soft jaw Aluminium	Nr. 837702	X	X	X	X	X	X	X	
Soft jaw Steel	Nr. 837703	X	X	X	X	X	X	X	

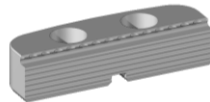
For the exact data of the jaws, please check the jaw catalogue.

Accessories

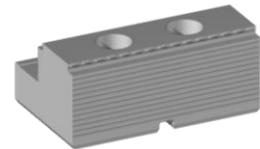
Jaw



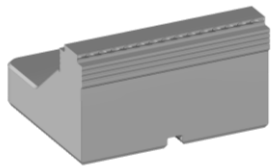
Nr. 837110



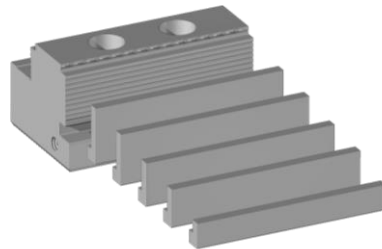
Nr. 837150



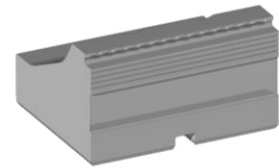
Nr. 837250



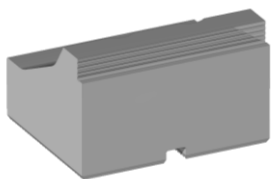
Nr. 837300



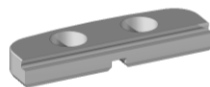
Nr. 837350



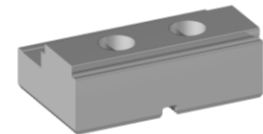
Nr. 837380



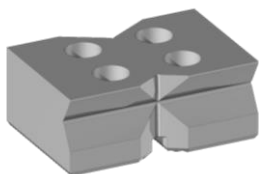
Nr. 837400



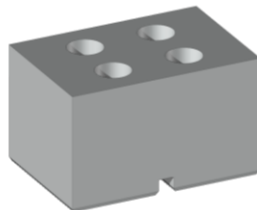
Nr. 837410



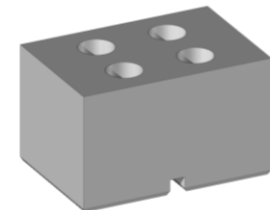
Nr. 837450



Nr. 837500



Nr. 837702



Nr. 837703

Accessories

Automation Solutions

The SC series can be included in any automation solution. From workpiece handling to clamping device handling to pallet handling, you are best recommended with the SC series.

Pallets from +GF+ / System 3R (number of possible devices)

SC-Size	SC-34	SC-40	SC-50	SC-60	SC-74	SC-100	SC-120
GPS 70	1	1					
Macro	1	1					
Macro Magnum	1,2,3	1,2	1				
GPS 120	1,2	1	1				
GPS 240			1	1,2	1,2	1,2	
Dynafix 280				1,2,3	1,2,3	1,2	
Dynafix 350				1,2,3,4,6	1,2,3,4,6	1,2,3	1,2
Delphin 398				1,2,3,4,6	1,2,3,4,6	1,2,3	1,2,3
Delphin 448				1,2,3,4,6	1,2,3,4,6	1,2,3	1,2,3

Accessories

Automation Solutions

Pallets from Erowa (number of possible devices)

SC-Grösse	SC-34	SC-40	SC-50	SC-60	SC-74	SC-100	SC-120
ITS 50	1						
ITS 70	1	1					
ITS 148	1	1	1				
VPC 52 / 96	1,2	1,2	1	1	1	1	1
UPC 320				1,2,3	1,2,3	1,2,3	1,2
MTS 400				1,2,3,4,6	1,2,3,4,6	1,2,3	1,2,3

Further manufacturers can be requested directly by Gremotool.

Device handling

The SC series can be changed directly on zero point Systems. For this purpose, the respective suitable drawing for the zero-point system will be integrated in the SC Serie. The clamping process can be carried out manually or by a suitable robot.

Direct clamping

The SC series can be equipped with straightening-elements for the table slot. This allows the user to fix the center clamp quick and correctly on the slot table.

If the milling table has a hole grid, the straightening elements can be selected on the base of this table. Thanks to the fits, the position is completely determined when fixing. These accessories can be requested and obtained by Gremotool.



Impressum

Gremotool GmbH
Wilerstrasse 3
CH-9200 Gossau
Schweiz

www.gremotool.ch
info@gremotool.ch
+41 (0)71 930 03 90

Our general terms and conditions
apply, which can be accessed at
www.gremotool.ch

Further catalogues can be down-
loaded from the website [www.gremo-
tool.ch](http://www.gremo-
tool.ch)

Commercial Register:
UID-Nr. CHE-498.310.590

This document is protected by copy-
right. All rights reserved. Any use,
even partial use, in particular publica-
tion, duplication, distribution, repro-
duction, processing and/or modifica-
tion, requires the prior written authori-
sation of Gremotool GmbH. Misprints,
errors, and technical changes re-
served.

Publication January 2024, 2nd Edition

